



D-4550 Surface-Mounted Door Closer
Extra-Durable and Lightweighted Body
made of R14 High-Silicon Hard Aluminum Alloy

Surface Mounted Door Closer
D-4550 SERIES
Heavy-Duty

RYOBI D-4550 SERIES (Heavy-Duty Models) (*1)

(*1) Extra-Durable and Lightweighted Body made of R14 High-Silicon Hard Aluminum Alloy

1. Model Chart

1-1. Original Set (Heavy-Duty Door Closer Body + original Regular Arm)

Model No.	Size = Closing Force (ANSI)	Model Selection		Applicable Door Size		
		with Delayed-Action	Body (Ryobi's part number)	Max. Width		Max. Weight
				Exterior	Interior	
D-4550 TP (*2)	2-6	D-4550DA TP	DB-4550/DB-4550DA	48"=4'0"(1,219mm)	60"=5'0"(1,524mm)	330lbs (150kgs)
D-4551 TP (*3)	1-4	D-4551DA TP	DB-4551/DB-4551DA	36"=3'0"(914mm)	44"=3'8"(1,118mm)	220lbs (100kgs)

(*2) D-4550 TP/D-4550DA TP/D-4551 TP/D-4551DA TP (Tri-Packs) are comprised of Body + Regular Arm (=main arm, forearm, and foot bracket) =A45-501 + Parallel Bracket.

(*3) D-4551 Sub-Series are applied to ADA Barrier Free standard.

(*4) Closing Force of Body with Track-Rail Arm as well as Parallel Arm is smaller than one of Body with Regular Arm.

1-2. Extra-Duty Parallel Arm

Option of Extra-Duty Parallel Arm by specification					
Parallel(Push Side)					
EDA(*5)	EDA-H	EDA-S	EDA-HS	EDA-CS	EDA-HCS
(A45-505)	(A45-505H)	(A45-505S)	(A45-505HS)	(A45-505CS)	(A45-505HCS)

(*5) Re suffix and description, please refer to P.3. The lower columns indicate Ryobi's part numbers.

1-3. Original Arm

Option of Original Arm by Mounting Application (Combination with Body)					
Regular(Pull Side)/Top-Jamb(Push Side)			Parallel(Push Side)	Track-Rail(Pull Side)	
(no suffix)(*6)	L (Top-Jamb only)	H	HP	T	HT
(A45-501)	(A45-501L)	(A45-501H)	(A45-503H)	(A45-507T)	(A45-507HT)

(*6) Re suffix and description, please refer to P.3. The lower columns indicate Ryobi's part numbers.

2. Features, Specifications, Finishes, and Accessories

2-1. Features

Advantage	Low Defective Ratio and Low Quality Uneveness Extra-Durable and Lightweighted Body made of R14 High-Silicon Hard Aluminum Alloy, and Extra-Durable Arm made of Forged-Steel High Efficiency (Closing Force/Opening Force=about 70% in whole closing cycle)				
Mechanism	Full Fluid Oil Hydraulic Checking, All-Season Fluid Latching-Action Rack & Pinion (stable closing/latching speeds)				
General Features	Non-Handed Backcheck (original function) (Advanced Backcheck model is available) Delayed-Action (option of body) Hold-Open (option of arm) (Hold-Open Angle and Force can be adjusted) Stop (option of arm) (Compression-Stop model is available)				
Compliance	(1) ANSI/BHMA A156.4-2019 Grade 1, (2) UL228/UL10C, (3) ADA Barrier Free (D-4551 Sub-Series only)				

2-2. Specifications

Adjustment	Closing Force Closing Speed, Latching Speed, and Backcheck Force Delayed-Action Speed	(by nut on the body and foot mounting position) (by valves on the body) (by valve on the body)
Arm Option for mounting application	Regular (pull side) & Top-Jamb (push side) Parallel (push side) Track-Rail (pull side)	(refer to Model Chart#1-3) (refer to Model Chart#1-3) (refer to Model Chart#1-3)
Supplemental Arm Option	Long Rod (option of arm, Top-Jamb only) Hold-Open (option of arm) Stop & Compression-Stop (option of arm)	(refer to Model Chart#1-2/1-3) (refer to Model Chart#1-2/1-3) (refer to Model Chart#1-2/1-3)

2-3. Finishes/Accessories

Finish	Aluminum-Silver painted, Dark-Bronze painted, or Black painted (selectional), Other finishes (optional)
Cover	Plastic Cover (original), Metal Cover (optional)
Furnished Items	Fasteners (machine screws, tapping screws, self-drilling tapping screws, hex key for valve, hex wrench for nut) Parallel Bracket for Tri-Pack to be applied to both mounting applications of "Regular Arm" and "Parallel Arm" Instruction Manual, and Template Paper

HOW TO ORDER (Suffix and Description)

1.How to Order

Model (Series)	Size (Sub-Series)	Body Options	Arm Options	Finish Selections
D-455	0: ANSI 2-6 1: ANSI 1-4 (ADA applied)	[no suffix] DA : Delayed-Action AVB: Advanced-Backcheck (D-4550 Sub-Series only) MC: Metal Cover	TP (Tri-Pack) [no suffix] L H HP T HT EDA EDA-H EDA-S EDA-HS EDA-CS EDA-HCS	AL689 DB695 BL693

2.Arm Options

Suffix	Description	Internal use only		
		Part Number	Accembling	UL Labeling
TP (no suffix)	(Original) Regular (Standard) Arm + Parallel Bracket	-	No	Yes (R)
L	(Original) Regular (Standard) Arm	A45-501	Yes (D)	Yes (D)
H	(Original) Regular (Standard) Arm with Long Rod Forearm for Top-Jamb Mounting Application	A45-501L	Yes (D)	Yes (D)
HP	(Original) Regular (Standard) Arm with Hold-Open	A45-501H	Yes (D)	No
T	(Original) Parallel Arm with Hold-Open	A45-503H	Yes (D)	No
HT	(Original) Track-Rail Arm	A45-507T	Yes (D)	Yes (D)
EDA	(Original) Track-Rail Arm with Hold-Open	A45-507HT	Yes (D)	No
EDA-H	Extra-Duty Parallel Arm	A45-505	Yes (D)	Yes (D)
EDA-S	Extra-Duty Parallel Arm with Hold-Open	A45-505H	Yes (D)	No
EDA-HS	Extra-Duty Parallel Arm with Stop	A45-505S	Yes (D)	Yes (D)
EDA-CS	Extra-Duty Parallel Arm with Hold-Open and Stop	A45-505HS	Yes (D)	No
EDA-HCS	Extra-Duty Parallel Arm with Compression-Stop (Cushion-Stop)	A45-505CS	Yes (D)	Yes (D)
EDA-HCS	Extra-Duty Parallel Arm with Hold-Open and Compression-Stop (Cushion-Stop)	A45-505HCS	Yes (D)	No

3.Finish Selections

Suffix	Decription
AL689	Aluminum-Silver Painted
DB695	Dark-Bronze Painted
BL693	Black painted
Others	(optional)

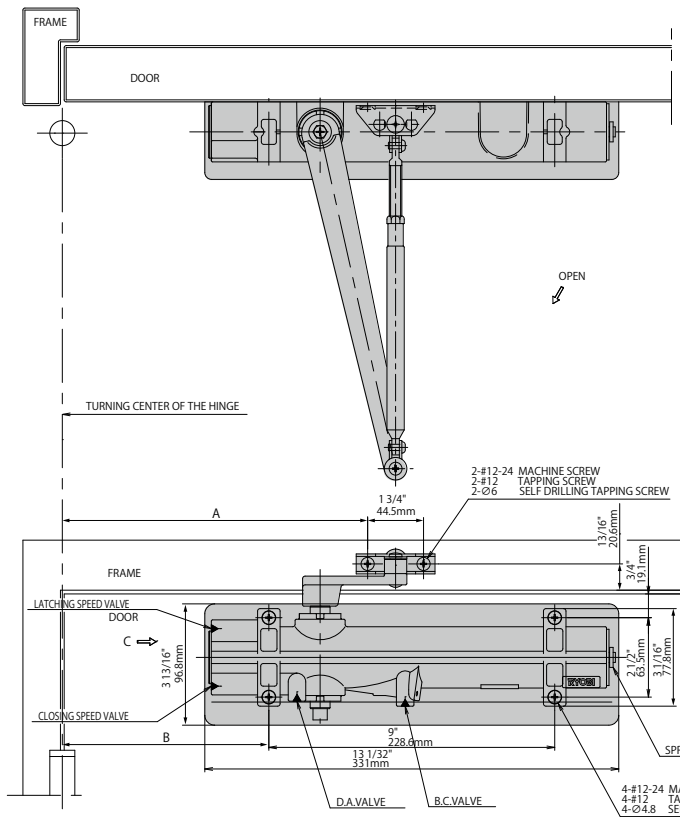
HOW TO ORDER (Suffix and Description, continued)

4. Accessory Options

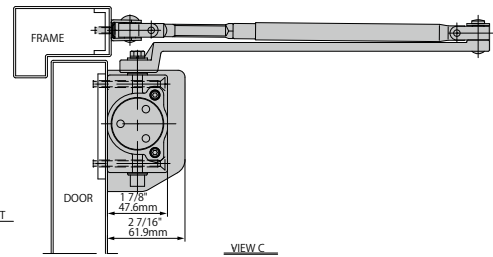
Suffix	Description	Internal use only		
		Part Number	Accembling	UL Labeling
P45-180	Heavy-Duty Drop Plate	P45-180 HD DPL	No	No
P45-180D	Heavy-Duty Drop Plate (deeper)	P45-180D HD DPL	No	No
P45-4040	Retrofit Plate to mount to LCN 4040 Hole Pattern	P45-4040 RPL	No	No
P45-113	Offset Plate	P45-113 OPL	No	No
P45-110	Spacer Block for Parallel Bracket	P45-110 SBL	No	No
P45HD-110	Heavy-Duty Spacer Block for Parallel Bracket	P45HD-110 HD SBL	No	No
P45-114	Angle Bracket for Parallel Bracket	P45-114 ABR-PB	No	No
P45HD-114	Heavy-Duty Angle Bracket for Parallel Bracket	P45HD-114 HD ABR-PB	No	No
P45HD-112	Angle Bracket for Shoe Support	P45HD-112 ABR-SS	No	No
P45-190	Angle Bracket for Top-Jamb Application	P45-190 ABR-TJ	No	No
MC-455	Metal Cover Satin Stainless Hairline (optional)	MC4550-630 S/S-H	No	No

RYOBI D-4550 SERIES

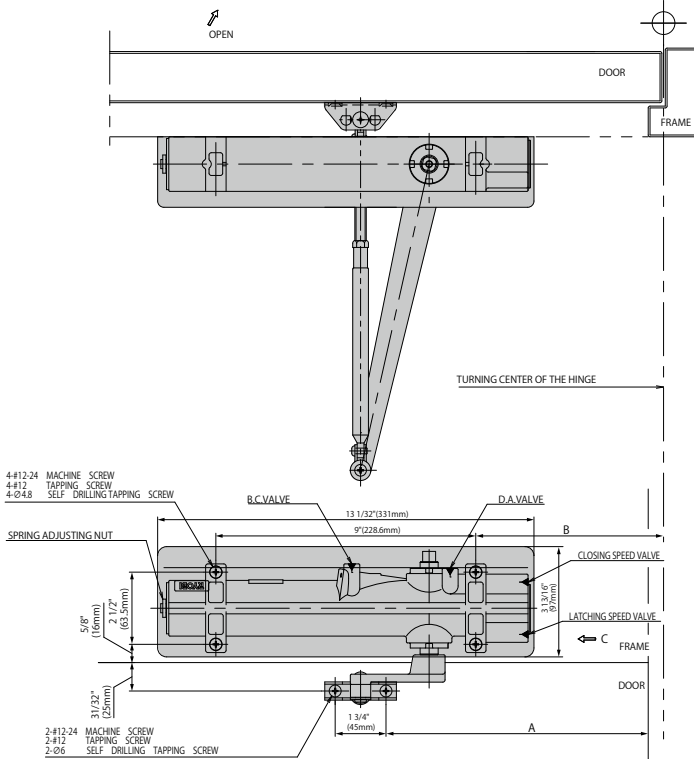
Regular Arm Application (Pull Side)



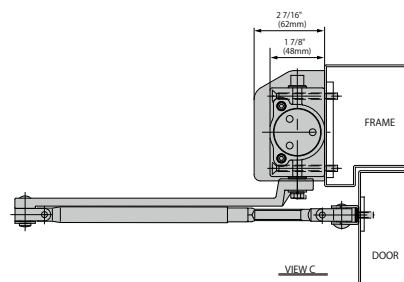
	MAXIMUM DOOR OPENING	
	120°	180°
A	11 5/8" (295.3mm)	9 5/8" (244.5mm)
B	8 1/2" (215.9mm)	6 1/2" (165.1mm)



Top-Jamb Application (Push Side with Regular Arm with Long Rod Forearm)

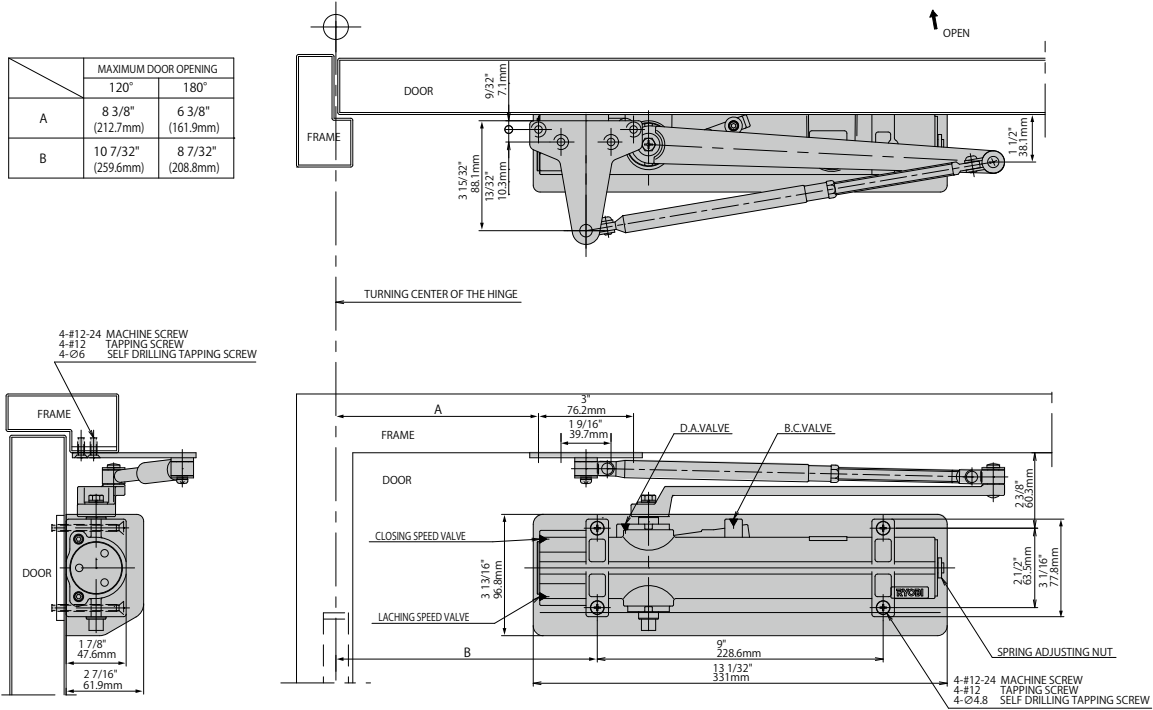


	MAXIMUM DOOR OPENING	
	120°	180°
A	11 5/8" (295mm)	9 5/8" (244mm)
B	8 1/2" (216mm)	6 1/2" (165mm)

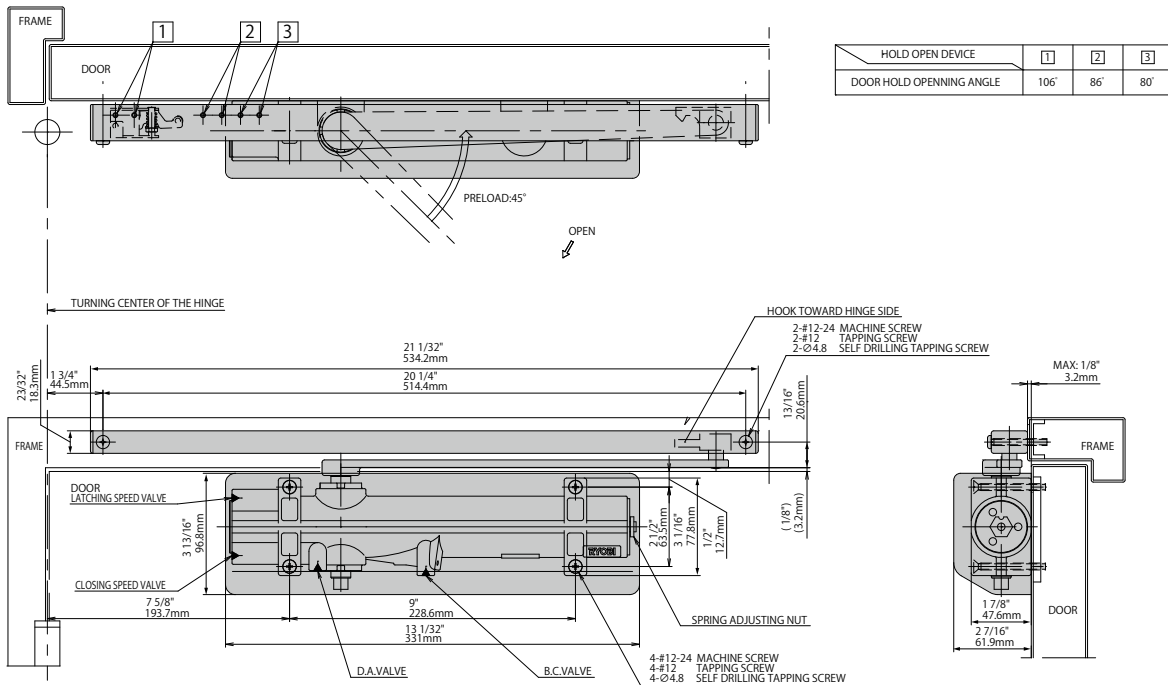


RYOBI D-4550 SERIES

Parallel Arm Application (Push Side)



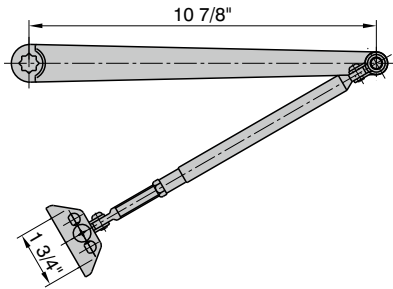
Track-rail Arm Application (Pull Side)



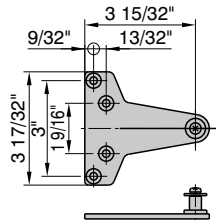
DRAWING OF ARM OPTIONS

■ Regular Arm [A45-501]

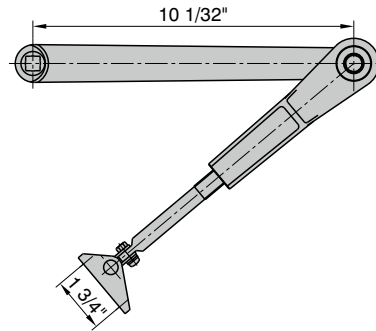
(Regular Arm with Long Rod Forearm [A45-501L])



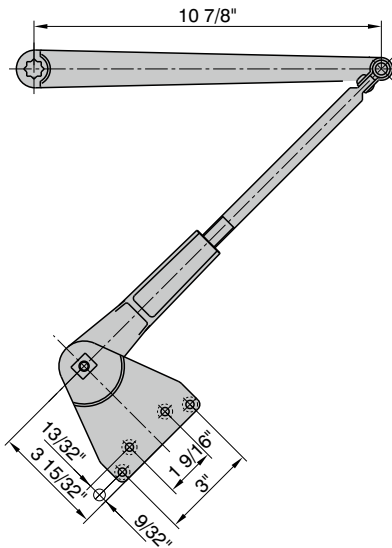
Parallel Bracket for Tri-Pack



■ Regular Arm with Hold-Open [A45-501H]

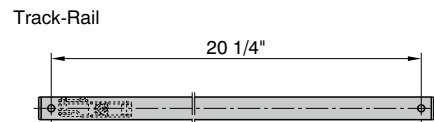
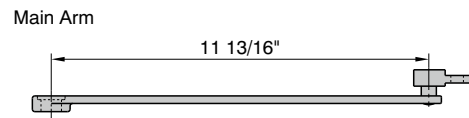


■ Parallel Arm with Hold-Open [A45-503H]



■ Track-Rail Arm [A45-507T]

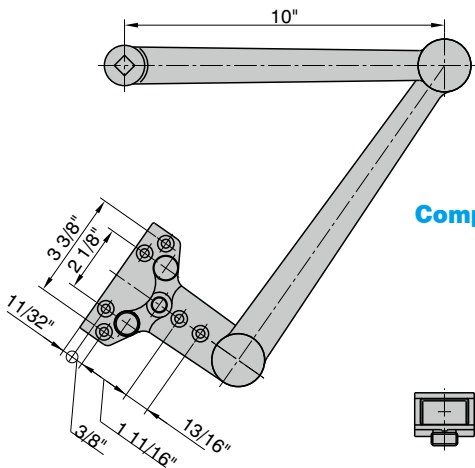
(Track-Rail Arm with Hold-Open [A45-507HT])



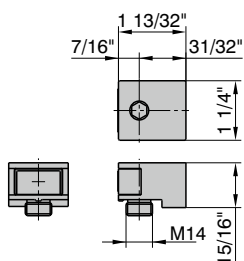
■ Extra-Duty Parallel Arm with Stop [A45-505S]

(Extra-Duty Parallel Arm [A45-505])

(Extra-Duty Parallel Arm with Compression-Stop [A45-507CS])



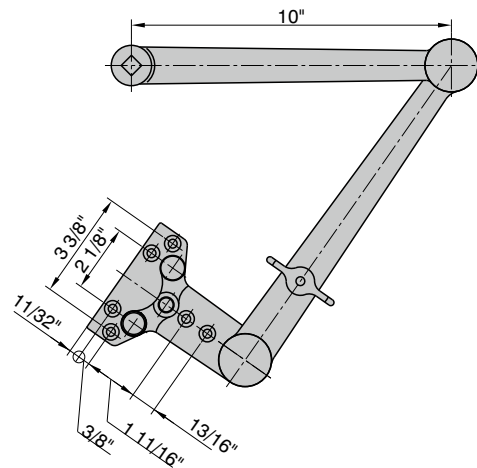
Compression-Stop



■ Extra-Duty Parallel Arm with Hold-Open and Stop [A45-505HS]

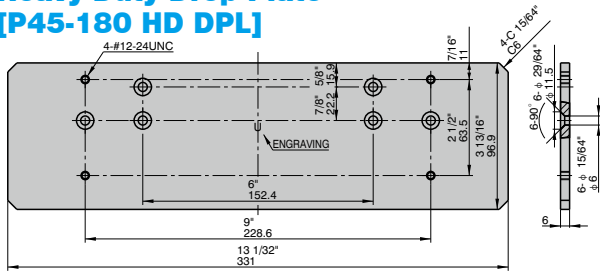
(Extra-Duty Parallel Arm with Hold-Open [A45-505H])

(Extra-Duty Parallel Arm with Hold-Open and Compression-Stop [A45-505HCS])

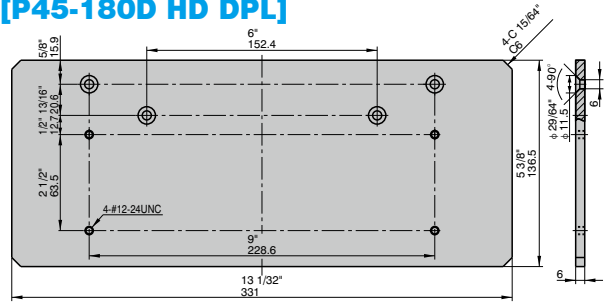


DRAWING OF ACCESSORY OPTIONS

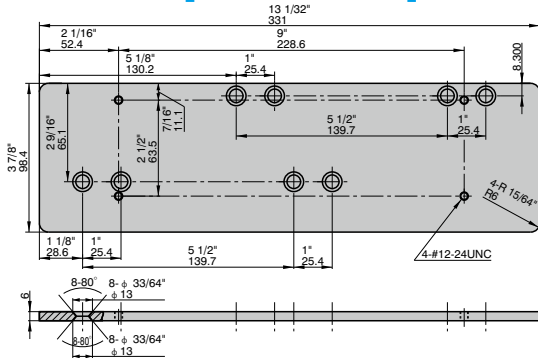
■ Heavy-Duty Drop Plate [P45-180 HD DPL]



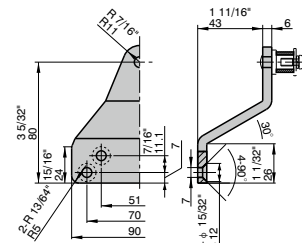
■ Heavy-Duty Drop Plate (deeper) [P45-180D HD DPL]



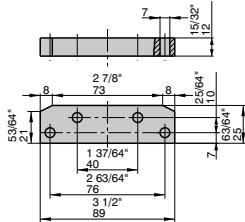
■ Retrofit Plate [P45-4040 RPL]



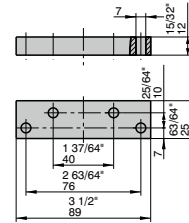
■ Offset Plate [P45-113 OPL]



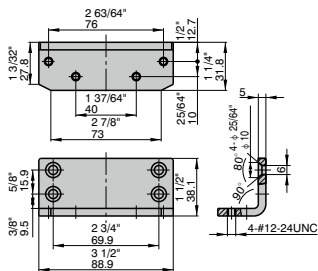
■ Spacer Block [P45-110 SBL]



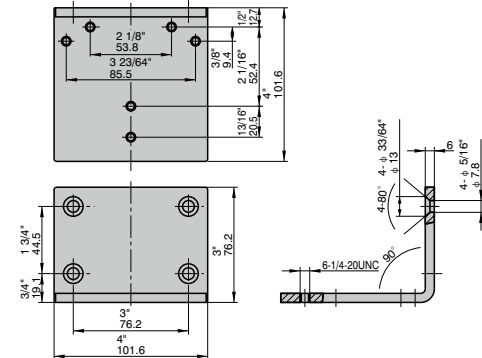
■ Heavy-Duty Spacer Block [P45HD-110 HD SBL]



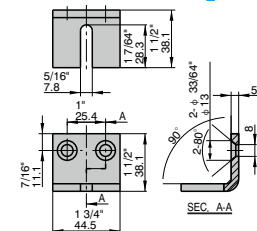
■ Angle Bracket for Parallel Bracket [P45-114 ABR-PB]



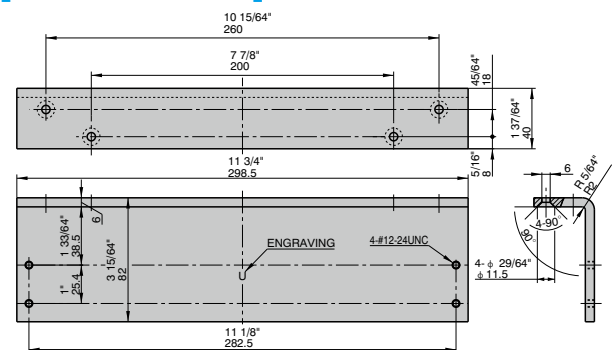
■ Heavy-Duty Angle Bracket for Parallel Bracket [P45HD-114 HD ABR-PB]



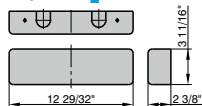
■ Angle Bracket for Shue Support [P45HD-112 HD ABR-SS]



■ Angle Bracket for Top-Jamb [P45-190 ABR-TJ]



■ Metal Cover Satin Stainless Hairline (optional) [MC4550-630 S/S-H]



PART NUMBER AND DESCRIPTION

1.D-4550 SERIES Door Closer, Aluminium-Silver painted

PART NUMBER	DESCRIPTION	Internal use only	
		Part Number (body/arm)	
a.			
D-4550 TP AL689	HD SM Door Closer, Tri-Pack (Body + Regular Arm + Parallel Bracket), AL689	-	-
D-4550DA TP AL689	HD SM Door Closer, Tri-Pack (Body with DA + Regular Arm + Parallel Bracket), AL689	-	-
D-4551 TP ADA AL689	HD SM Door Closer, Tri-Pack (Body + Regular Arm + Parallel Bracket), ADA, AL689	-	-
D-4551DA TP ADA AL689	HD SM Door Closer, Tri-Pack (Body with DA + Regular Arm + Parallel Bracket), ADA, AL689	-	-
b.			
D4550 RG AL689	HD SM Door Closer Body + Regular Arm, AL689	DB-4550 AL	A45-501 AL
D4550 L NA TJ AL689	HD SM Door Closer Body + Regular Arm with Long Rod NA for TJ, AL689	DB-4550 AL	A45-501L AL
D4550 H RG AL689	HD SM Door Closer Body + Regular Arm with Hold-Open, AL689	DB-4550 AL	A45-501H AL
D4550 HP PR AL689	HD SM Door Closer Body + Parallel Arm with Hold-Open, AL689	DB-4550 AL	A45-503H AL
D4550 T TR AL689	HD SM Door Closer Body + Track-Rail Arm, AL689	DB-4550 AL	A45-507T AL
D4550 HT TR AL689	HD SM Door Closer Body + Track Rail Arm with Hold-Open, AL689	DB-4550 AL	A45-507HT AL
c.			
D4550 EDA PR AL689	HD SM Door Closer Body + EDA, AL689	DB-4550 AL	A45-505 AL
D4550 EDA-H PR AL689	HD SM Door Closer Body + EDA with Hold-Open, AL689	DB-4550 AL	A45-505H AL
D4550 EDA-S PR AL689	HD SM Door Closer Body + EDA with Stop, AL689	DB-4550 AL	A45-505S AL
D4550 EDA-HS PR AL689	HD SM Door Closer Body + EDA with Hold-Open and Stop, AL689	DB-4550 AL	A45-505HS AL
D4550 EDA-CS PR AL689	HD SM Door Closer Body + EDA with Compression-Stop, AL689	DB-4550 AL	A45-505CS AL
D4550 EDA-HCS PR AL689	HD SM Door Closer Body + EDA with Hold-Open and Compression Stop, AL689	DB-4550 AL	A45-505HCS AL
d.			
D4550DA RG AL689	HD SM Door Closer Body with DA + Regular Arm, AL689	DB-4550DA AL	A45-501 AL
D4550DA L NA TJ AL689	HD SM Door Closer Body with DA + Regular Arm with Long Rod NA for TJ, AL689	DB-4550DA AL	A45-501L AL
D4550DA H RG AL689	HD SM Door Closer Body with DA + Regular Arm with Hold-Open, AL689	DB-4550DA AL	A45-501H AL
D4550DA HP PR AL689	HD SM Door Closer Body with DA + Parallel Arm with Hold-Open, AL689	DB-4550DA AL	A45-503H AL
D4550DA T TR AL689	HD SM Door Closer Body with DA + Track-Rail Arm, AL689	DB-4550DA AL	A45-507T AL
D4550DA HT TR AL689	HD SM Door Closer Body with DA + Track Rail Arm with Hold-Open, AL689	DB-4550DA AL	A45-507HT AL
e.			
D4550DA EDA PR AL689	HD SM Door Closer Body with DA + EDA, AL689	DB-4550DA AL	A45-505 AL
D4550DA EDA-H PR AL689	HD SM Door Closer Body with DA + EDA with Hold-Open, AL689	DB-4550DA AL	A45-505H AL
D4550DA EDA-S PR AL689	HD SM Door Closer Body with DA + EDA with Stop, AL689	DB-4550DA AL	A45-505S AL
D4550DA EDA-HS PR AL689	HD SM Door Closer Body with DA + EDA with Hold-Open and Stop, AL689	DB-4550DA AL	A45-505HS AL
D4550DA EDA-CS PR AL689	HD SM Door Closer Body with DA + EDA with Compression-Stop, AL689	DB-4550DA AL	A45-505CS AL
D4550DA EDA-HCS PR AL689	HD SM Door Closer Body with DA + EDA with Hold-Open and Compression Stop, AL689	DB-4550DA AL	A45-505HCS AL

2.D-4550 SERIES Door Closer, Aluminium-Silver Painted (continued)

PART NUMBER	DESCRIPTION	Internal use only	
		Part Number (body/arm)	
f.			
D4551 RG ADA AL689	HD SM Door Closer Body + Regular Arm, ADA, AL689	DB-4551 AL	A45-501 AL
D4551 L NA TJ ADA AL689	HD SM Door Closer Body + Regular Arm with Long Rod NA for TJ, ADA, AL689	DB-4551 AL	A45-501L AL
D4551 H RG ADA AL689	HD SM Door Closer Body + Regular Arm with Hold-Open, ADA, AL689	DB-4551 AL	A45-501H AL
D4551 HP PR ADA AL689	HD SM Door Closer Body + Parallel Arm with Hold-Open, ADA, AL689	DB-4551 AL	A45-503H AL
D4551 T TR ADA AL689	HD SM Door Closer Body + Track-Rail Arm, ADA, AL689	DB-4551 AL	A45-507T AL
D4551 HT TR ADA AL689	HD SM Door Closer Body + Track Rail Arm with Hold-Open, ADA, AL689	DB-4551 AL	A45-507HT AL
g.			
D4551 EDA PR ADA AL689	HD SM Door Closer Body + EDA, ADA, AL689	DB-4551 AL	A45-505 AL
D4551 EDA-H PR ADA AL689	HD SM Door Closer Body + EDA with Hold-Open, ADA, AL689	DB-4551 AL	A45-505H AL
D4551 EDA-S PR ADA AL689	HD SM Door Closer Body + EDA with Stop, ADA, AL689	DB-4551 AL	A45-505S AL
D4551 EDA-HS PR ADA AL689	HD SM Door Closer Body + EDA with Hold-Open and Stop, ADA, AL689	DB-4551 AL	A45-505HS AL
D4551 EDA-CS PR ADA AL689	HD SM Door Closer Body + EDA with Compression-Stop, ADA, AL689	DB-4551 AL	A45-505CS AL
D4551 EDA-HCS PR ADA AL689	HD SM Door Closer Body + EDA with Hold-Open and Compression Stop, ADA, AL689	DB-4551 AL	A45-505HCS AL

PART NUMBER AND DESCRIPTION (Continued)

2.D-4550 SERIES Door Closer, Aluminium-Silver Painted (continued)

PART NUMBER	DESCRIPTION	Internal use only	
		Part Number (body/arm)	
h.			
D4551DA RG ADA AL689	HD SM Door Closer Body with DA + Regular Arm, ADA, AL689	DB-4551DA AL	A45-501 AL
D4551DA L NA TJ ADA AL689	HD SM Door Closer Body with DA + Regular Arm with Long Rod NA for TJ, ADA, AL689	DB-4551DA AL	A45-501L AL
D4551DA H RG ADA AL689	HD SM Door Closer Body with DA + Regular Arm with Hold-Open, ADA, AL689	DB-4551DA AL	A45-501H AL
D4551DA HP PR ADA AL689	HD SM Door Closer Body with DA + Parallel Arm with Hold-Open, ADA, AL689	DB-4551DA AL	A45-503H AL
D4551DA T TR ADA AL689	HD SM Door Closer Body with DA + Track-Rail Arm, ADA, AL689	DB-4551DA AL	A45-507T AL
D4551DA HT TR ADA AL689	HD SM Door Closer Body with DA + Track Rail Arm with Hold-Open, ADA, AL689	DB-4551DA AL	A45-507HT AL
i.			
D4551DA EDA PR ADA AL689	HD SM Door Closer Body with DA + EDA, ADA, AL689	DB-4551DA AL	A45-505 AL
D4551DA EDA-H PR ADA AL689	HD SM Door Closer Body with DA + EDA with Hold-Open, ADA, AL689	DB-4551DA AL	A45-505H AL
D4551DA EDA-S PR ADA AL689	HD SM Door Closer Body with DA + EDA with Stop, ADA, AL689	DB-4551DA AL	A45-505S AL
D4551DA EDA-HS PR ADA AL689	HD SM Door Closer Body with DA + EDA with Hold-Open and Stop, ADA, AL689	DB-4551DA AL	A45-505HS AL
D4551DA EDA-CS PR ADA AL689	HD SM Door Closer Body with DA + EDA with Compression-Stop, ADA, AL689	DB-4551DA AL	A45-505CS AL
D4551DA EDA-HCS PR ADA AL689	HD SM Door Closer Body with DA + EDA with Hold-Open and Compression Stop, ADA, AL689	DB-4551DA AL	A45-505HCS AL

3.REMARKS

TP: Tri-Pack (Door Closer Body + Regular Arm + Parallel Bracket)

HD: Heavy-Duty

SM: Surface-Mounted

RG: Regular (Standard) Arm

NA: Non-Assembled

TJ: Top-Jump Mounting Application

PR: Parallel Arm

TR: Track-Rail Arm

DA: Delayed-Action

AL689 : Aluminum-Silver Painted

DB695 : Dark-Bronze painted

BL693 : Black painted

ADA: ADA Barrier Free standard Applied

EDA: Extra-Duty Parallel Arm

COMPLIANCE

Quality-Rated	The D-4550 Series Door Closers have been certified and complied with "ANSI/BHMA A156.4-2019 Standard for Door Controls - Closers" as "Grade 1"
Fire-Rated	(1) The D-4550 Series Door Closers have been listed in the file number R7525 of UL/cUL as "Swinging Fire Door Closers" to meet the UL 228 (Standard for Door Closers-Holders, With or Without Integral Smoke Detectors) (2) The D-4550 Series Door Closers have been listed in the file number R7525 of UL/cUL as "Swinging Fire Door Closers" for "Self-Closing Doors without Hold-Open feature" to meet the UL 10C (Standard for Positive Pressure Fire Tests of Door Assemblies)
Disability-Rated	The D-4551 Sub-Series have been applied to ADA Barrier Free standard (to meet entrance accessibility requirements of 5lbf opening force or less).
Limited Warranty	10-year from the date of manufacture