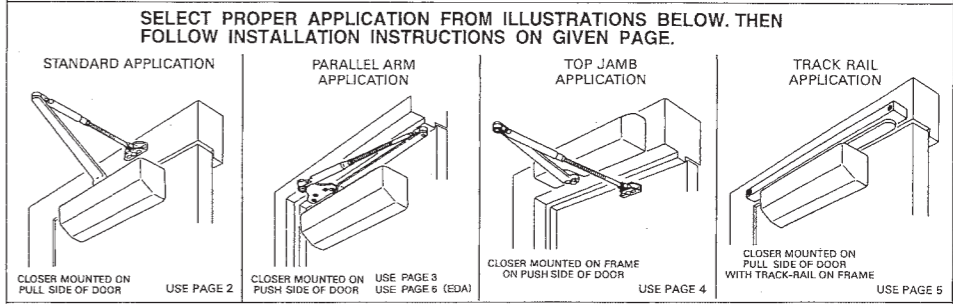


# RYOBI DOOR CLOSER

## D-3550 AND D-3551 INSTALLATION INSTRUCTIONS

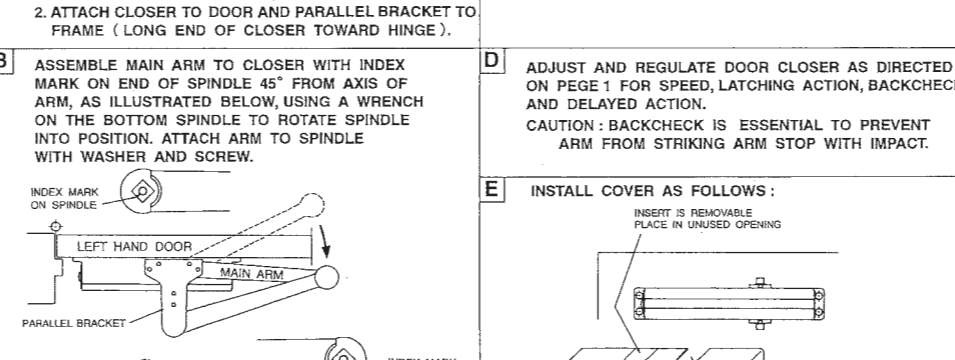
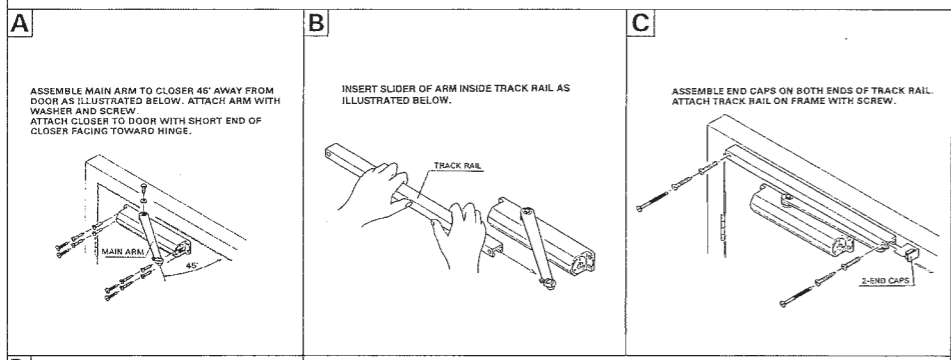


ADJUST SPRING POWER ACCORDING TO CHART (FOR STANDARD, PARALLEL ARM, AND TOP JAMB APPLICATIONS)

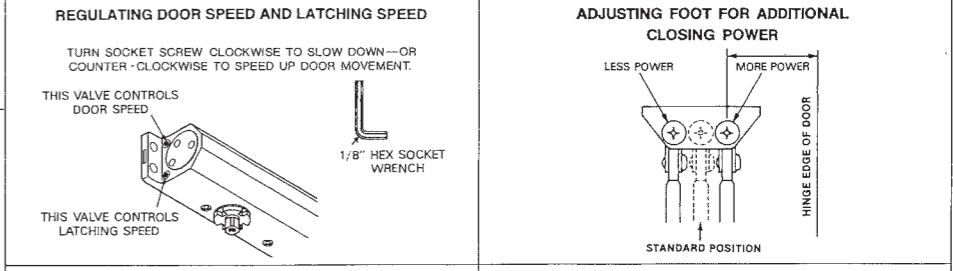
REFER TO PAGE 6 FOR TRACK RAIL APPLICATION

ADJUST SPRING POWER FOR DOOR WIDTH AS INDICATED IN CHART TO INCREASE CLOSING POWER, TURN SPRING ADJUSTING NUT CLOCKWISE.

Closer size	Max. Door Width		Turns of Spring Adjusting Nut				Closing force (N=30°)
	Exterior	Interior	D-3550		D-3551		
1	Less than 2'6"	2'8"	from Preset	from Minimum	from Preset	from Minimum	9.5
2	Less than 2'6"	2'8"	-3	0	-1	2	14.7
3	2'6"	3'2"	-1	2	1	4	23.2
4	3'0"	3'8"	2	5	5	8	40.7
5	3'6"	4'0"	4	7			50.9
6	4'0"	5'0"	7	10			69.0



### FINAL ADJUSTMENT AND REGULATING PROCEDURES

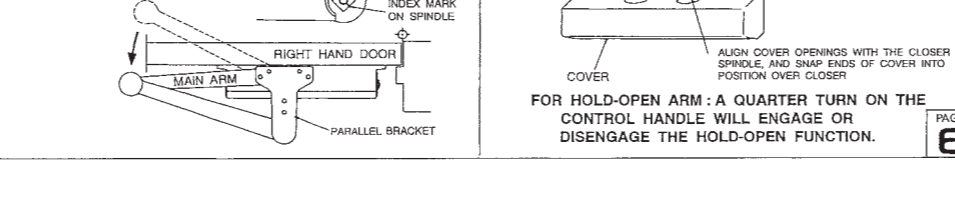


**D** ADJUST AND REGULATE DOOR CLOSER AS DIRECTED AT PAGE 1.

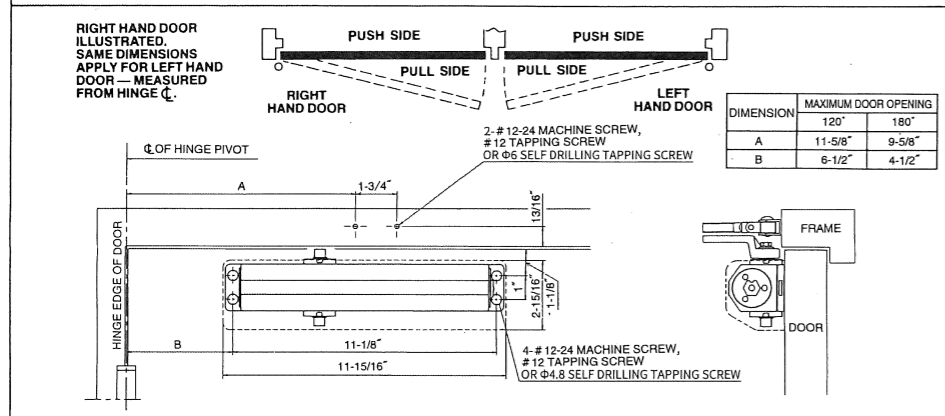
**E** INSTALL COVER, AS FOLLOWS: ALIGN COVER OPENINGS WITH THE CLOSER SPINDLE, AND SNAP ENDS OF COVER INTO POSITION OVER CLOSER. INSERT IS REMOVABLE PLACE IN UNUSED OPENING.

**ADJUST SPRING POWER ACCORDING TO CHART FOR TRACK RAIL APPLICATION**

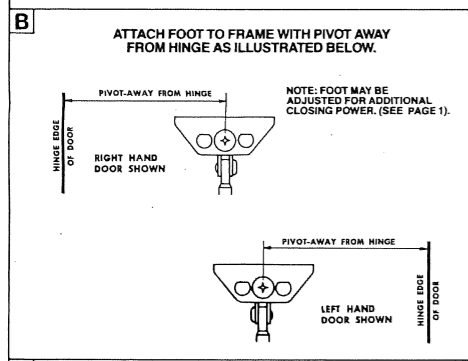
Closer size	Max. Door Width		Turns of Spring Adjusting Nut	
	Exterior	Interior	from Preset	from Minimum
1	less than 2'6"	2'8"	-3 Turns	0
2	2'6"	3'2"	0	+3 Turns
3	3'0"	3'8"	+6 Turns	+9 Turns



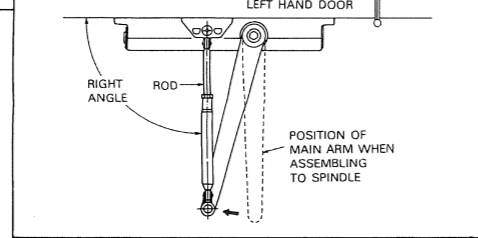
**INSTALLATION INSTRUCTIONS**      **STANDARD APPLICATION**      **CLOSER MOUNTED ON PULL SIDE OF DOOR**



- A**
1. MARK LOCATION OF ATTACHING SCREWS ON DOOR AND FRAME AS SHOWN ABOVE.
  2. ATTACH CLOSER TO DOOR WITH SHORT END OF CLOSER FACING TOWARD HINGE.

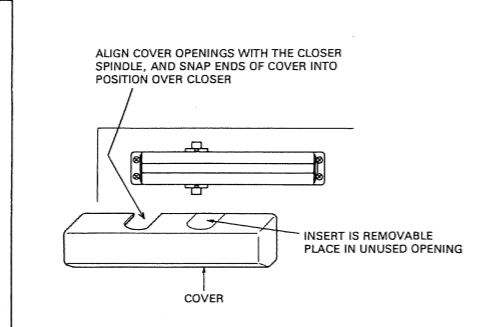


- D**
- TIGHTEN LOCKNUT SECURELY WHEN ROD IS AT RIGHT ANGLE TO DOOR. SEE ILLUSTRATION BELOW.

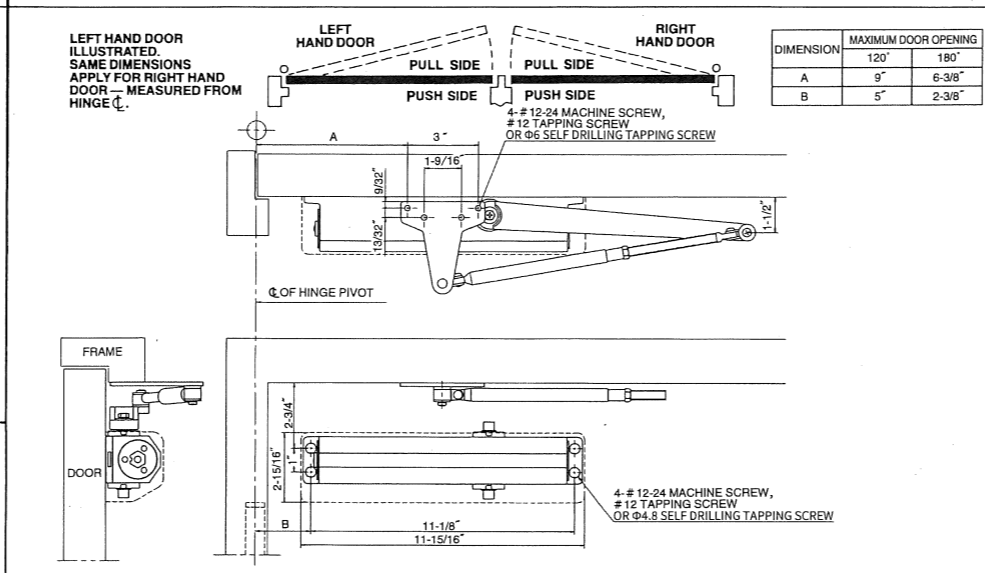


- E**
- ADJUST AND REGULATE DOOR CLOSER AS DIRECTED AT PAGE 1.

- F**
- INSTALL COVER, AS FOLLOWS:

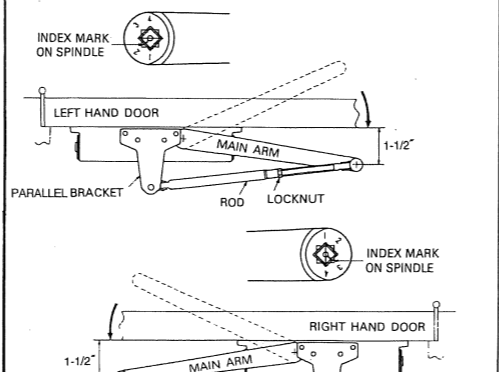


**INSTALLATION INSTRUCTIONS**      **PARALLEL ARM APPLICATION**      **CLOSER MOUNTED ON STOP SIDE OF DOOR**



- A**
1. MARK LOCATIONS OF ATTACHING SCREWS ON DOOR AND FRAME AS SHOWN ABOVE.
  2. ATTACH CLOSER TO DOOR AND PARALLEL BRACKET TO FRAME (LONG END OF CLOSER TOWARD HINGE).

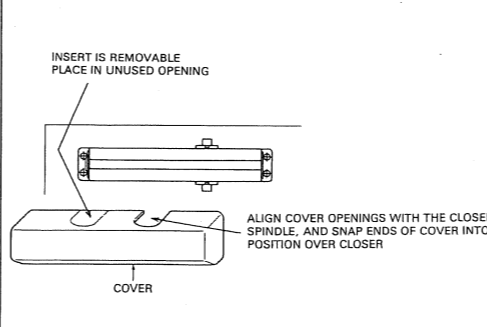
- B**
- ASSEMBLE MAIN ARM TO CLOSER WITH INDEX MARK ON END OF SPINDLE 45° FROM AXIS OF ARM, AS ILLUSTRATED BELOW, USING A WRENCH ON THE BOTTOM SPINDLE TO ROTATE SPINDLE INTO POSITION. ATTACH ARM TO SPINDLE WITH WASHER AND SCREW.



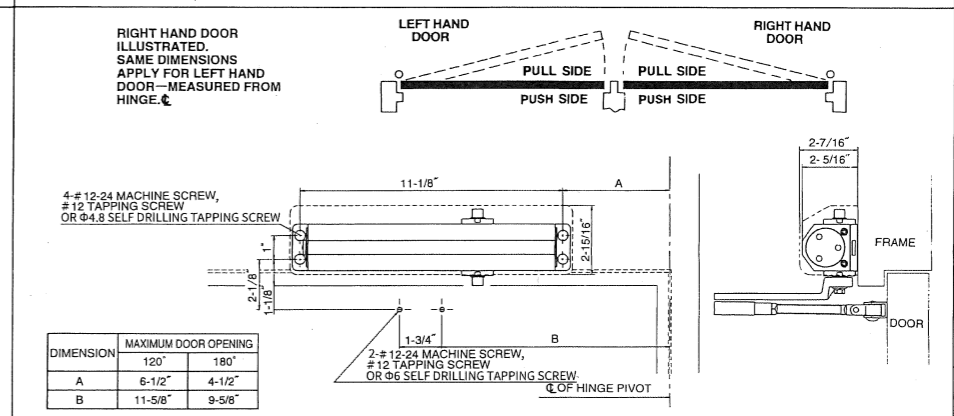
- C**
- IF FOOT ASSEMBLY SHOWN ON PAGE 2 IS PACKED WITH CLOSER, CONVERT TO FOOT BRACKET ASSEMBLY SHOWN ABOVE AS FOLLOWS: REMOVE ROD ASSEMBLY FROM FOOT AND ATTACH ROD TO PARALLEL BRACKET USING WASHER AND SCREW SHOWN. TIGHTEN LOCKNUT SECURELY WHEN END OF MAIN ARM IS POSITIONED 1-1/2" AWAY FROM DOOR.

- D**
- ADJUST AND REGULATE DOOR CLOSER AS DIRECTED AT PAGE 1.

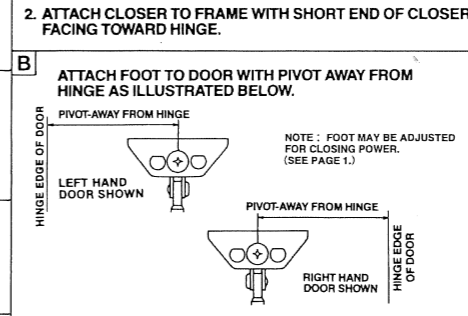
- E**
- INSTALL COVER AS FOLLOWS:



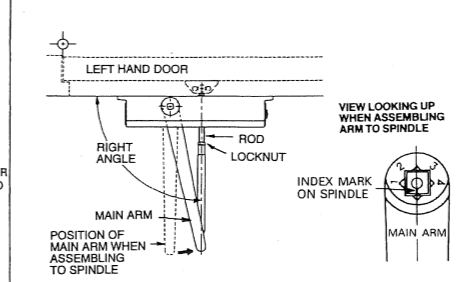
**INSTALLATION INSTRUCTIONS**      **TOP JAMB APPLICATION**      **CLOSER MOUNTED ON FRAME ON PUSH SIDE OF DOOR**



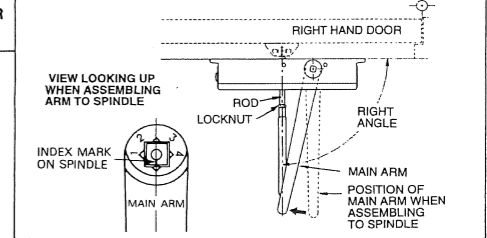
- A**
1. MARK LOCATION OF ATTACHING SCREWS ON DOOR AND FRAME AS SHOWN ABOVE.
  2. ATTACH CLOSER TO FRAME WITH SHORT END OF CLOSER FACING TOWARD HINGE.



- C**
- ASSEMBLE MAIN ARM TO CLOSER WITH INDEX MARK ON SPINDLE ALIGNED WITH AXIS OF ARM AS ILLUSTRATED BELOW. ATTACH ARM WITH WASHER AND SCREW.



- D**
- TIGHTEN LOCKNUT SECURELY WHEN ROD IS AT RIGHT ANGLE TO FRAME. SEE ILLUSTRATIONS BELOW.



- E**
- ADJUST AND REGULATE DOOR CLOSER AS DIRECTED AT PAGE 1.

- F**
- INSTALL COVER AS FOLLOWS:

