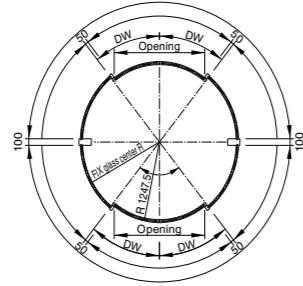
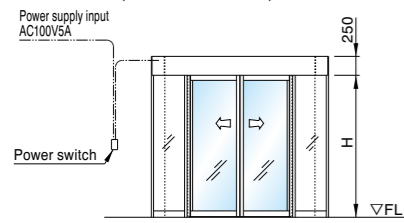




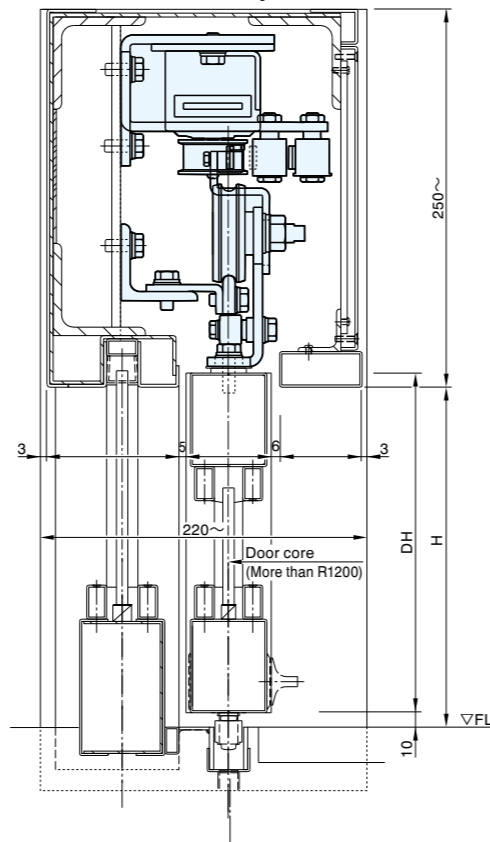
ROUND DOOR

ROUND DOOR (RH-550R, RH-660R)

BI-PARTING (WHOLE ROUND)

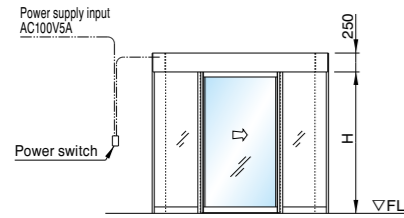


Dimension is indicated by m/m unit

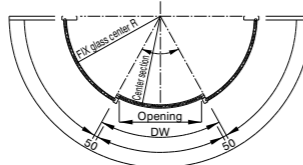
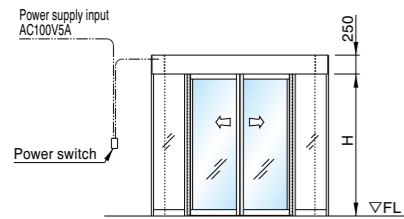


- Standard radius is 1500mm.
- Other dimensions in radius is available at option.

SINGLE (HALF ROUND)



BI-PARTING (HALF ROUND)



EXAMPLE LAYOUT



NOTE

- Prepare and install transformer according to local voltage.
- Prepare and install activating switch.
- Prepare and install safety beam.

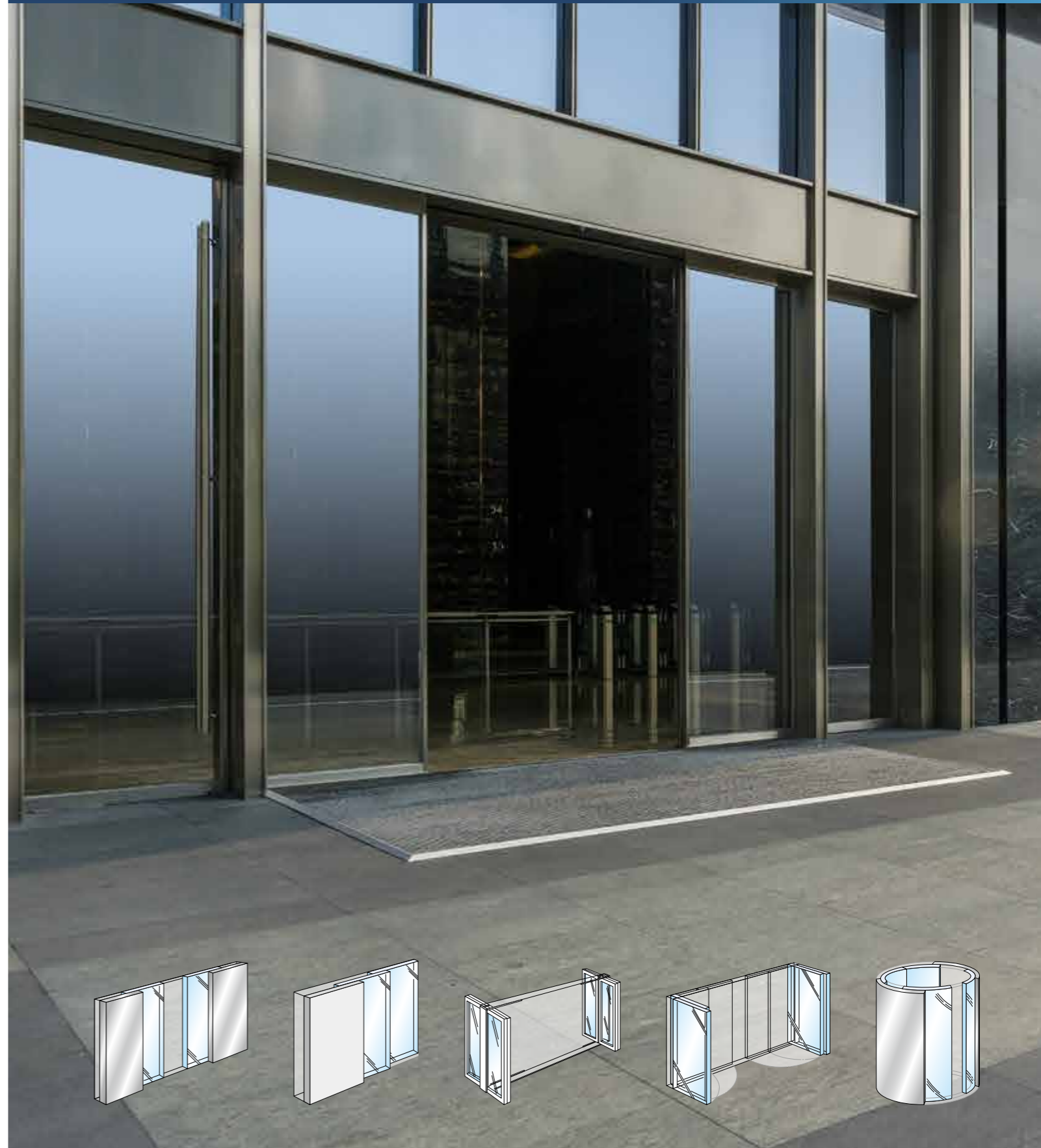
DISTRIBUTED BY

RYOBI LIMITED

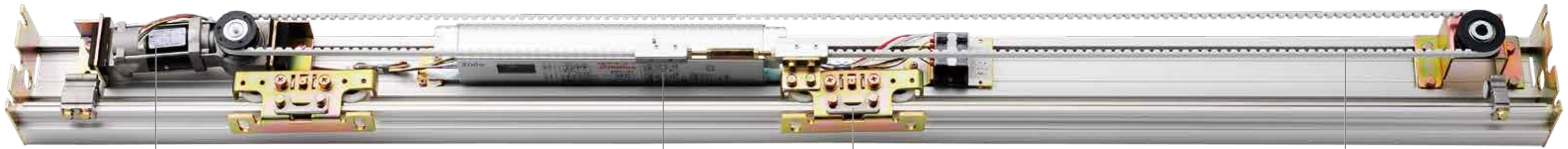
5-2-8 Toshima, Kita-ku Tokyo 114-8518, Japan
Tel. 81-3-3927-5536 Fax. 81-3-3927-5527



AUTOMATIC DOOR OPERATOR



FEATURE



DC BRUSHLESS HYPOID - GEAR MOTOR

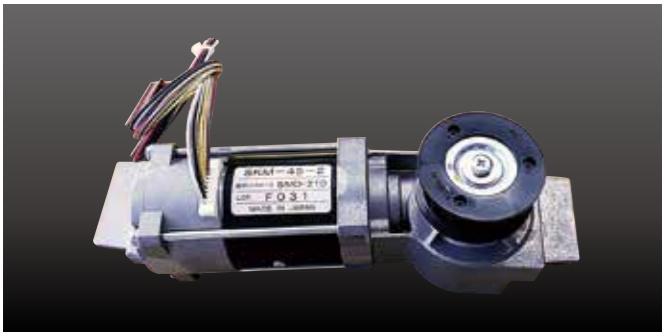
MICROCOMPUTER CONTROLLER

DOUBLE ROLLER HANGER

URETHANE BELT

• DC BRUSHLESS HYPOID-GEAR MOTOR

Adoption of DC brushless Hypoid-Gear Motor contributes to silent and smooth operation, resulting in speedy opening and closing cycles and reverse actions, and remarkable durability. Recommendable for heavy traffic entrance.



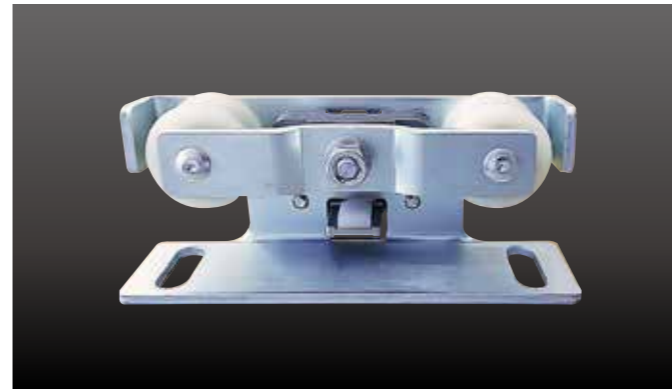
• MICROCOMPUTER CONTROLLER

Opening stroke and speed, damping speed, and brake force can be adjusted by switch on controller unit or optional remote controller unit. Learning operation provides the precise door opening and closing stroke. Automatic setting of brake, safety reverse action, safety stop function ensures high level of security at entrance. Not only such detailed setting but also anomaly detection display working as troubleshooting realize comfortable and safety operation, and easier maintenance.



• DOUBLE ROLLER HANGER

Double rollers and right-and-left symmetrical roller center ensure high durability, stable actions, and ease in workability. The door alignment can be adjusted simply by hanging bracket lock bolt (M8×18).



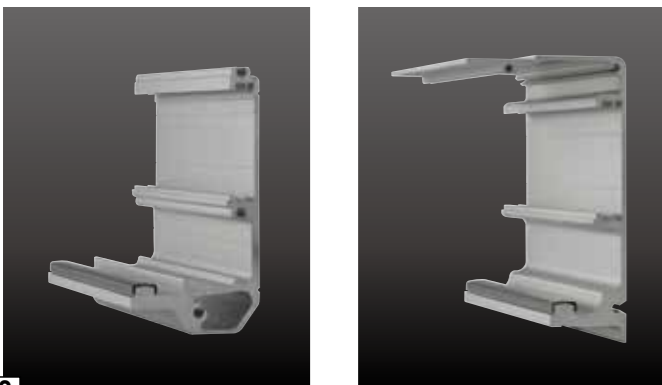
• URETHANE BELT

Adoption of urethane belt contributes to longer durability and cleaner operation. Urethane belt is more durable and higher wear-resistance. Generation of mine dust can be minimized against standard rubber belt.



• STAINLESS HANGER RAIL COVER (OPTION)

Optional stainless hanger rail cover on aluminum frame supports to remarkable durability of 4,000,000 operations. Recommendable for heavy traffic entrance.

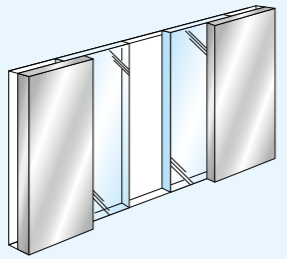


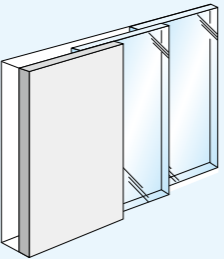
• REMOTE CONTROLLER (OPTION)

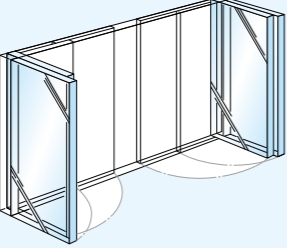
Opening stroke and speed, damping speed, and brake force can be adjusted by the remote controller unit.

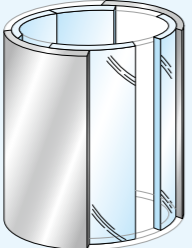


MODEL CHART

Type of Door	Description
Sliding Door	
	Model
	Surface mount Concealed mount
	Maximum Door Weight
	Minimum Applicable Door Width
	Voltage
	Opening Speed
	Closing Speed
	Hold-Open Time
	Power Consumption
	Applicable Temperature
	Insulation Resistance
	Dielectric Strength
	Manual Opening/Closing Force
Maximum Door Stroke	

Telescopic Door	Double Slide	Model
		Maximum Door Weight
		Minimum Applicable Door Width
		Voltage
		Opening Speed
		Closing Speed
	Triple Slide	
		Model
		Maximum Door Weight
		Minimum Applicable Door Width
		Voltage
		Opening Speed
Quad Slide	Model	
	Maximum Door Weight	
	Minimum Applicable Door Width	
	Voltage	
	Opening Speed	
	Closing Speed	

Space Make Door	
	Model
	Surface mount Concealed mount
	Maximum Door Weight
	Applicable Door Width
	Voltage
	Opening Speed
	Closing Speed
	Hold-Open Time
	Power Consumption
	Applicable Temperature
	Insulation Resistance
	Dielectric Strength
	Manual Opening/Closing Force
Maximum Door Stroke	

Round Door	
	Model
	Maximum Door Weight
	Minimum Applicable Door Width
	Voltage
	Opening Speed
	Closing Speed
	Hold-Open Time
	Power Consumption
	Applicable Temperature
	Insulation Resistance
	Dielectric Strength
	Manual Opening/Closing Force
	Maximum Door Stroke

Light Duty		Medium Duty		Heavy Duty		Ultra Heavy Duty	
Single	Bi-Parting	Single	Bi-Parting	Single	Bi-Parting	Single	Bi-Parting
RL-100	RL-200	RM-300	RM-400	RH-500	RH-600	N/A	N/A
RL-110	RL-220	RM-330	RM-440	RH-550	RH-660	RHS-550	RHS-660
60Kg×1	40Kg×2	100Kg×1	75Kg×2	120Kg×1	120Kg×2	150Kg×1	150Kg×2
500mm		500mm		500mm		800mm	650mm
AC100V±10% 50/60Hz		AC100V±10% 50/60Hz		AC100V±10% 50/60Hz		AC100V±10% 50/60Hz	
100 - 500mm/s		100 - 500mm/s		100 - 500mm/s		100 - 500mm/s	
100 - 350mm/s		100 - 350mm/s		100 - 350mm/s		100 - 350mm/s	
0 - 9S		0 - 9S		0 - 9S		0 - 9S	
80W		90W		140W		200W	
-10 - +40°C		-10 - +40°C		-10 - +40°C		-10 - +40°C	
DC500V 100MΩ		DC500V 100MΩ		DC500V 100MΩ		DC500V 100MΩ	
AC1500V 1MIN		AC1500V 1MIN		AC1500V 1MIN		AC1500V 1MIN	
Less than 100N		Less than 100N		Less than 100N		Less than 100N	
10M		10M		10M		10M	

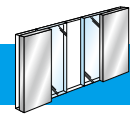
N/A	RM-300S2	RM-400W2	RH-500S2	RH-600W2	N/A	RS-770S2	RS-880W2
	75Kg×2	50Kg×4	100Kg×2	60Kg×4		140Kg×2	100Kg×4
	500mm		500mm			900mm	
	AC100V±10% 50/60Hz		AC100V±10% 50/60Hz			AC100V±10% 50/60Hz	
	100 - 500mm/s		100 - 500mm/s			100 - 500mm/s	
	100 - 350mm/s		100 - 350mm/s			100 - 350mm/s	
	0 - 9S		0 - 9S			0 - 9S	
	90W		140W			220W	
	-10 - +40°C		-10 - +40°C			-10 - +40°C	
	DC500V 100MΩ		DC500V 100MΩ			DC500V 100MΩ	
	AC1500V 1MIN		AC1500V 1MIN			AC1500V 1MIN	
	Less than 100N		Less than 100N			Less than 150N	
10M		10M		10M			

N/A	RM-300S3	RM-400W3	RH-500S3	RH-600W3	N/A	RS-770S3	RS-880W3
	50Kg×3	40Kg×6	70Kg×3	50Kg×6		100Kg×3	75Kg×6
	500mm		500mm			900mm	
	AC100V±10% 50/60Hz		AC100V±10% 50/60Hz			AC100V±10% 50/60Hz	
	100 - 500mm/s		100 - 500mm/s			100 - 500mm/s	
	100 - 350mm/s		100 - 350mm/s			100 - 350mm/s	
	0 - 9S		0 - 9S			0 - 9S	
	90W		140W			220W	
	-10 - +40°C		-10 - +40°C			-10 - +40°C	
	DC500V 100MΩ		DC500V 100MΩ			DC500V 100MΩ	
	AC1500V 1MIN		AC1500V 1MIN			AC1500V 1MIN	
	Less than 100N		Less than 100N			Less than 150N	
10M		10M		10M			

N/A	N/A	N/A	N/A	RS-770S4	RS-880W4
				75Kg×4	50Kg×8
				900mm	
				AC100V±10% 50/60Hz	
				100 - 500mm/s	
				100 - 350mm/s	
				0 - 9S	
				220W	
				-10 - +40°C	
				DC500V 100MΩ	
				AC1500V 1MIN	
				Less than 150N	
10M					

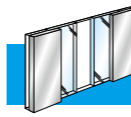
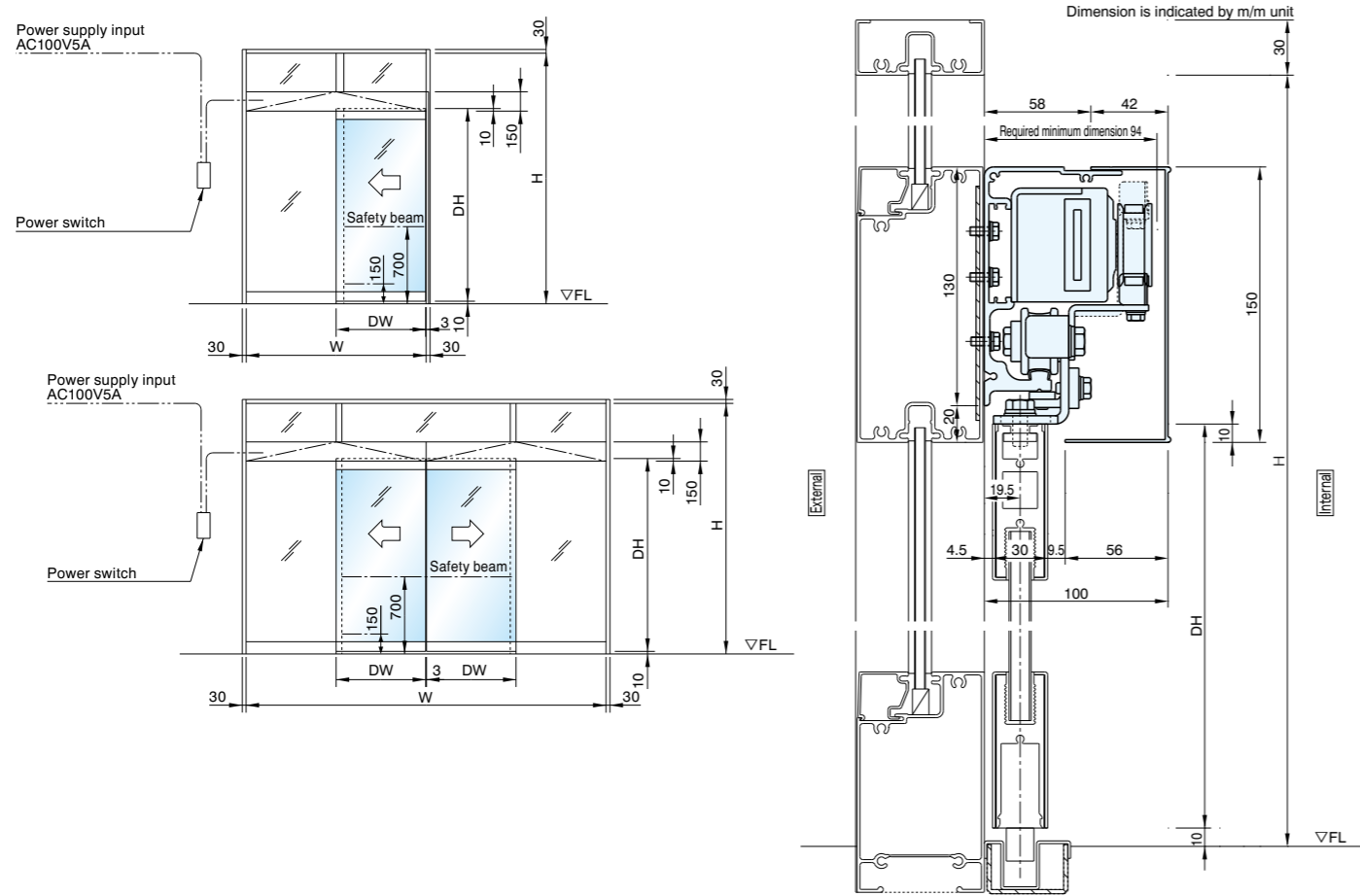
N/A	RSMH-300S	RSMH-400W	N/A	RSMH-600W	N/A	N/A
	RSMH-330S	RSMH-440W		RSMH-660W		
	100Kg×1	75Kg×2		100Kg×2		
	735mm - 1250mm			735mm - 1250mm		
	AC100V±10% 50/60Hz			AC100V±10% 50/60Hz		
	100 - 500mm/s			100 - 500mm/s		
	100 - 350mm/s			100 - 350mm/s		
	0 - 9S			0 - 9S		
	90W			140W		
	-10 - +40°C			-10 - +40°C		
	DC500V 100MΩ			DC500V 100MΩ		
	AC1500V 1MIN			AC1500V 1MIN		
Less than 100N		Less than 100N				
10M		10M				

N/A	N/A	RH-550R	RH-660R	N/A	N/A
		120Kg×1	120Kg×2		
		800mm			
		AC100V±10% 50/60Hz			
		100 - 500mm/s			
		100 - 350mm/s			
		0 - 9S			
		140W			
		-10 - +40°C			
		DC500V 100MΩ			
		AC1500V 1MIN			
		Less than 100N			
10M					



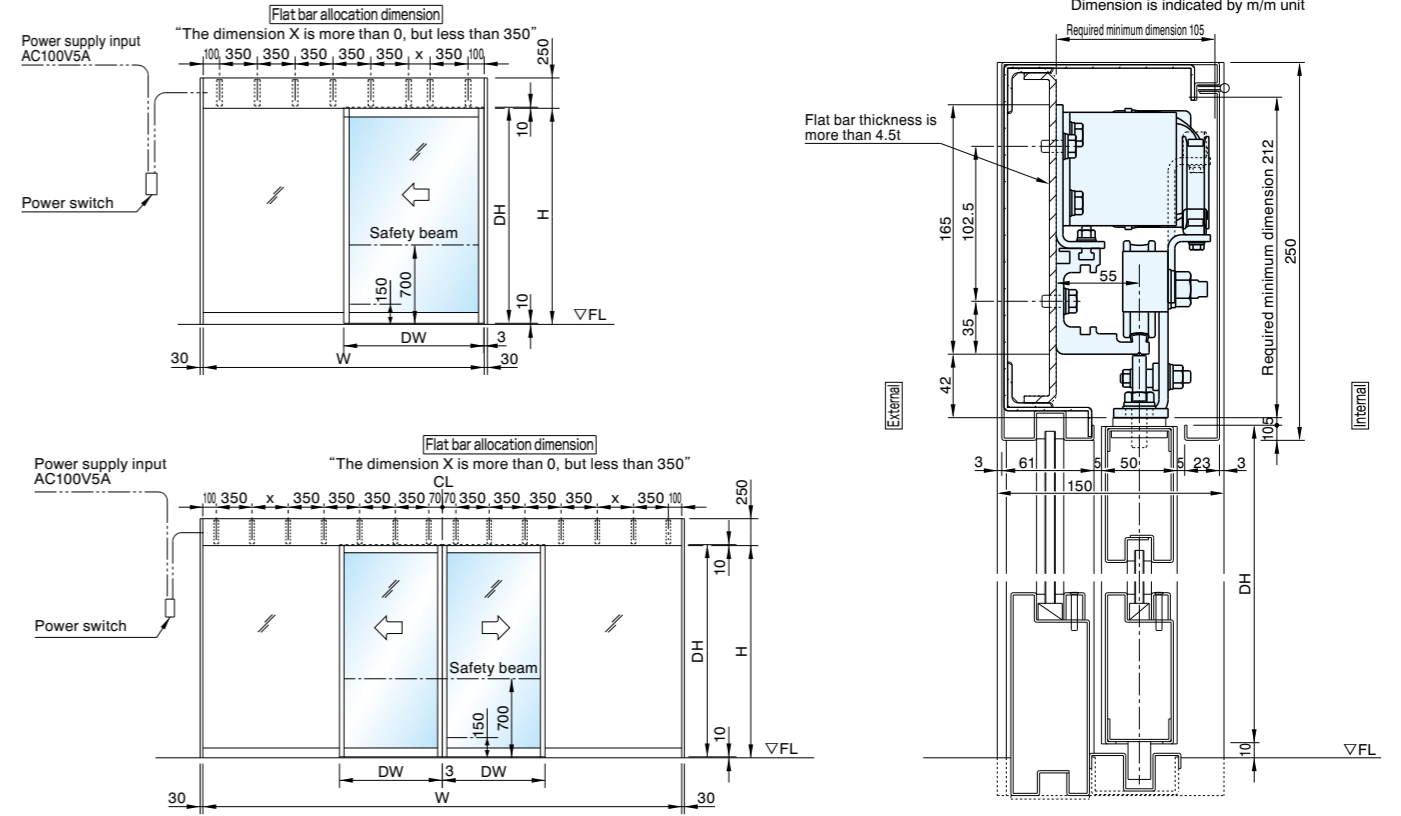
SLIDING DOOR

SLIDING DOOR SURFACE MOUNT (RL-100, RL-200, RM-300, RM-400, RH-500, RH-600)

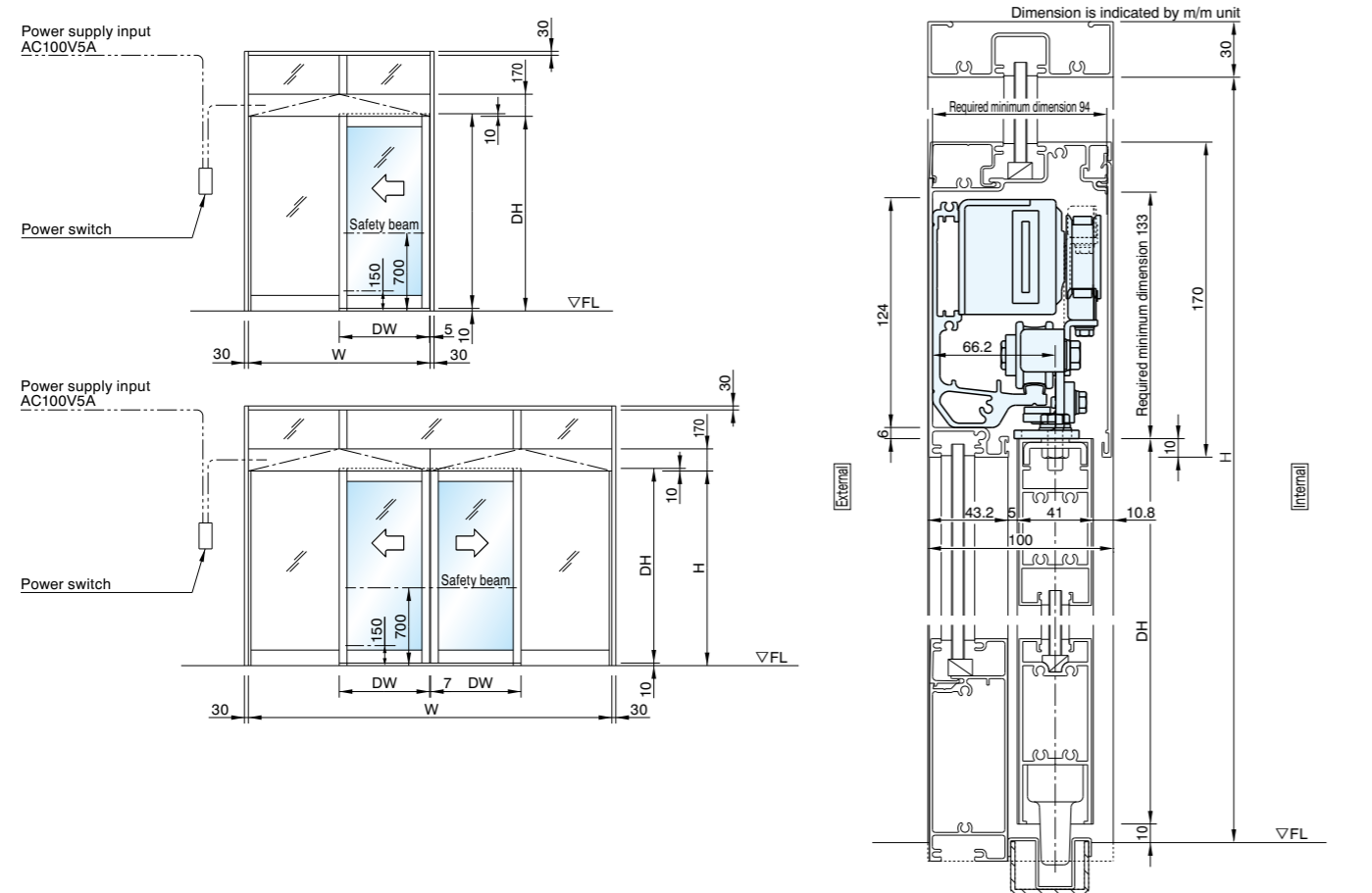


SLIDING DOOR

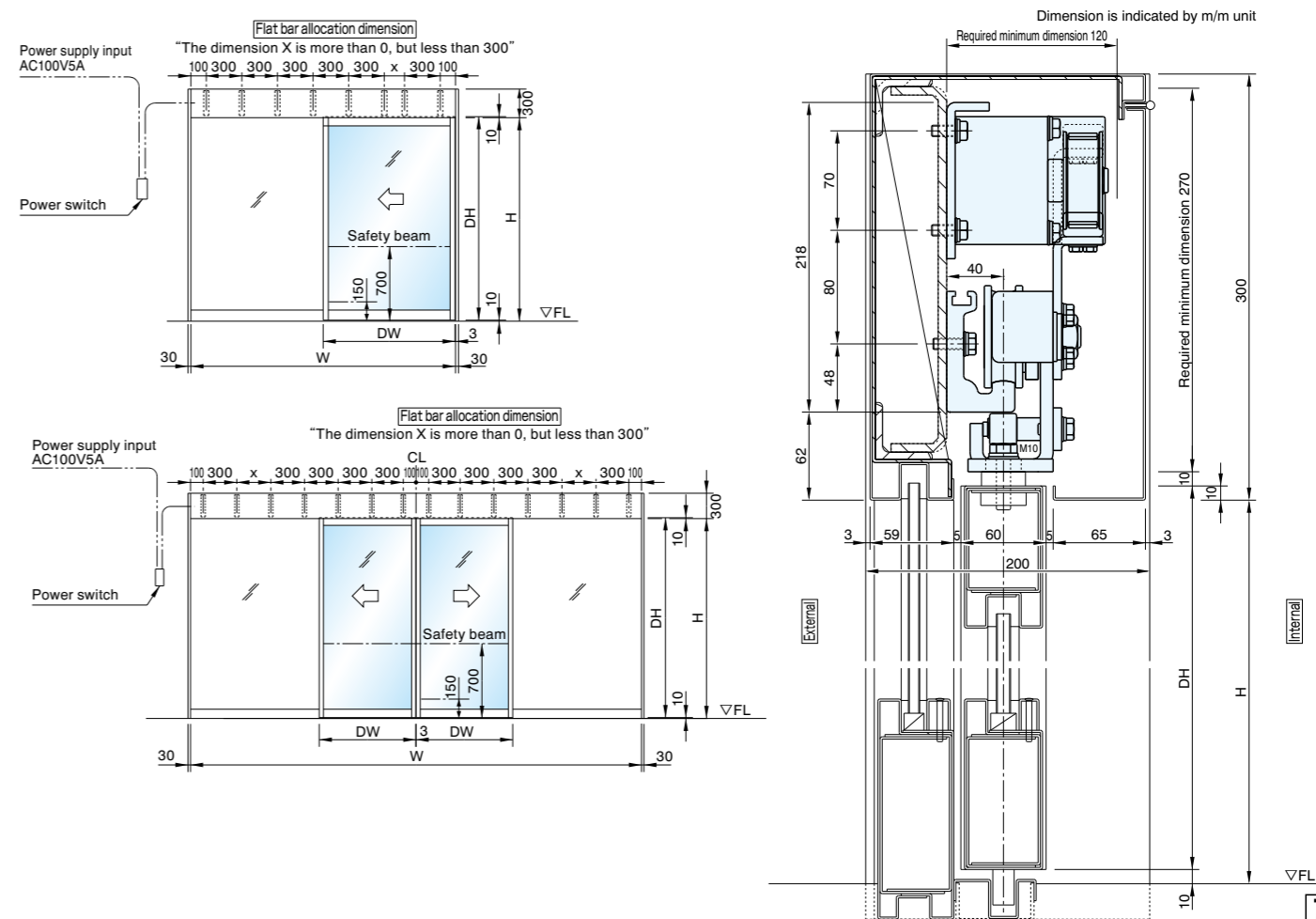
SLIDING DOOR CONCEALD MOUNT (RHS-550, RHS-660)

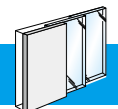


SLIDING DOOR CONCEALED MOUNT (RL-110, RL-220, RM-330, RM-440, RH-550, RH-660)



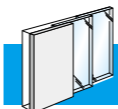
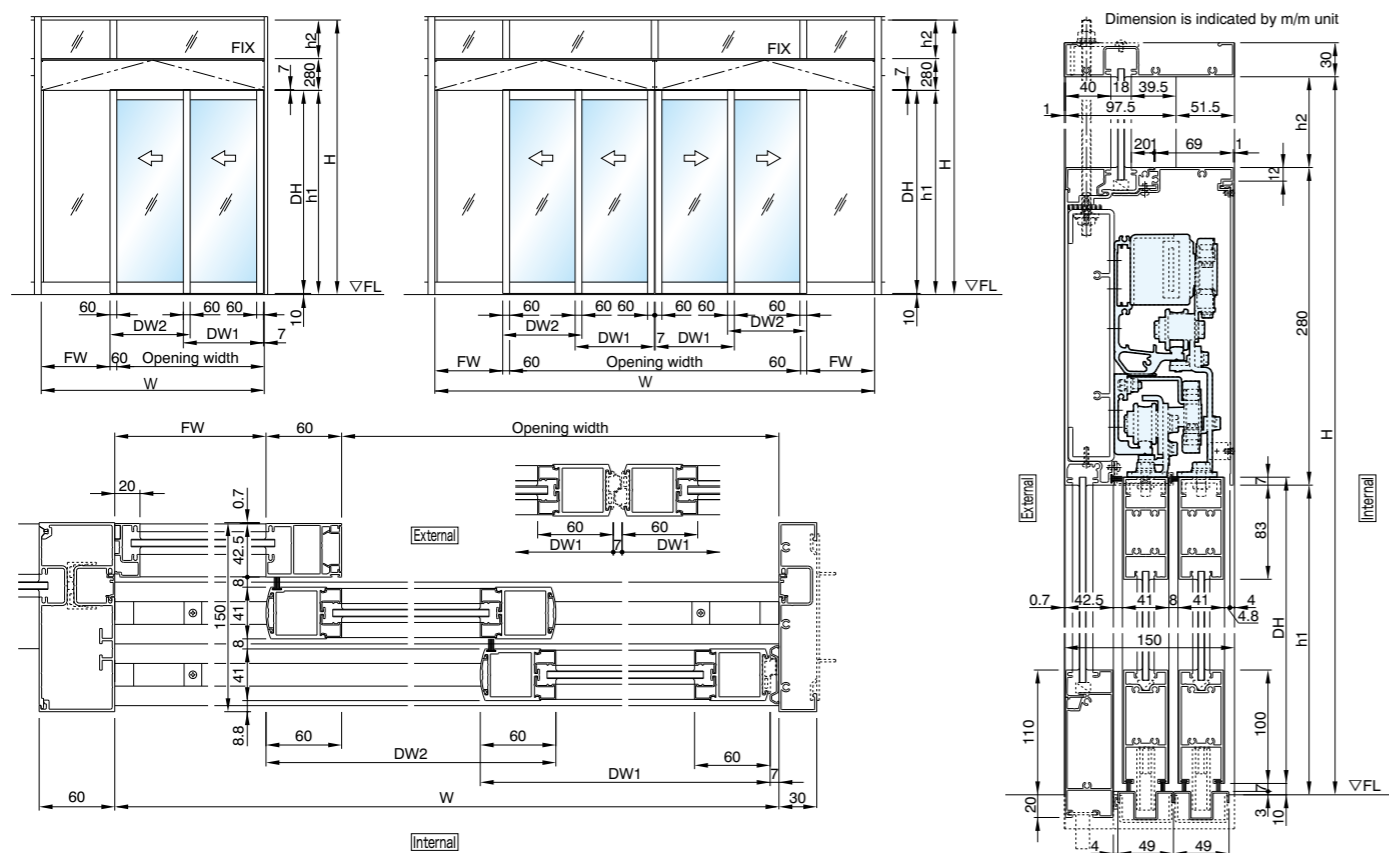
SLIDING DOOR CONCEALED MOUNT (RSA-770, RSA-880)





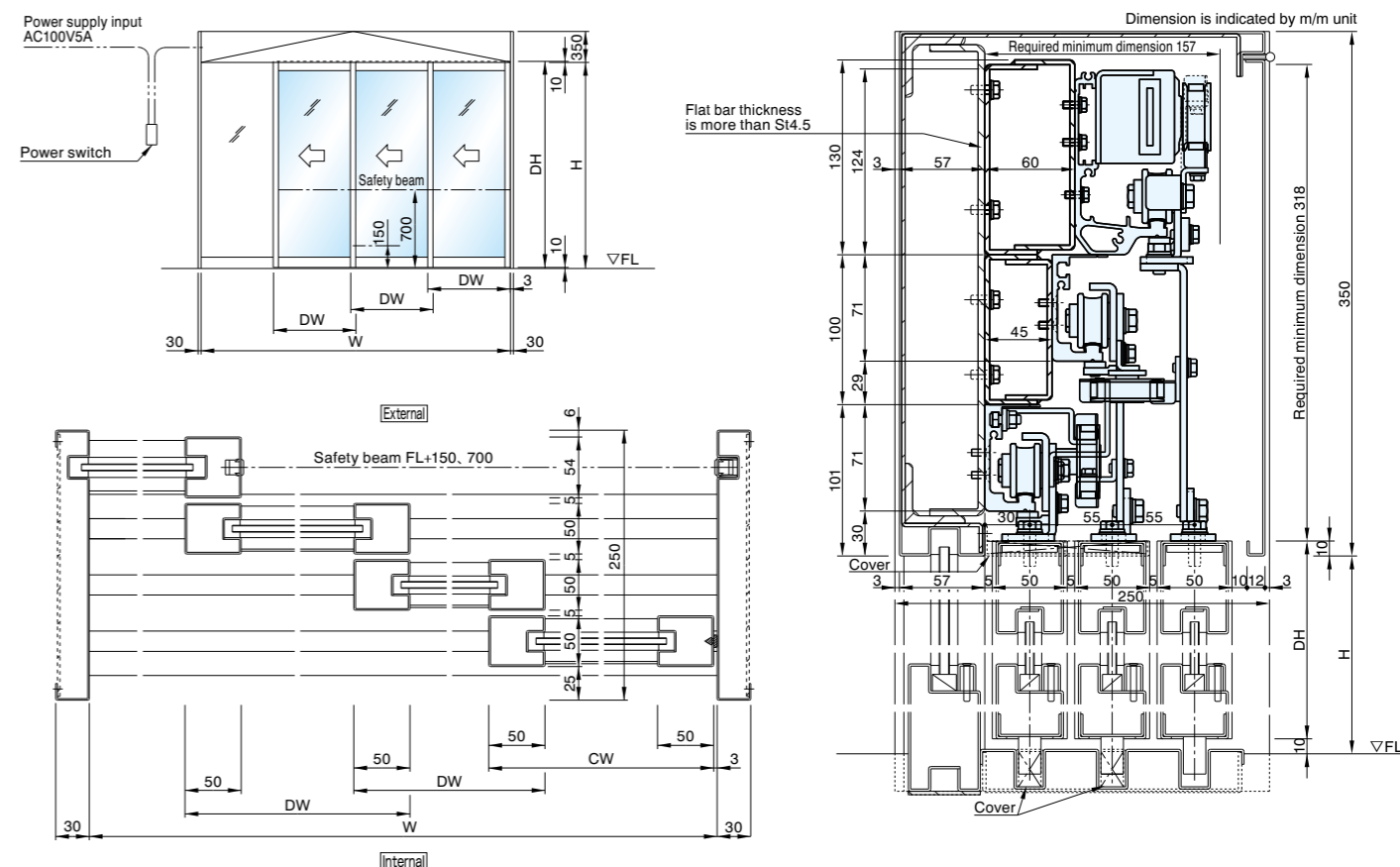
TELESCOPIC DOOR

DOUBLE SLIDING TELESCOPIC DOOR (RM-300S2, RM-400W2, RH-500S2, RH-600W2)

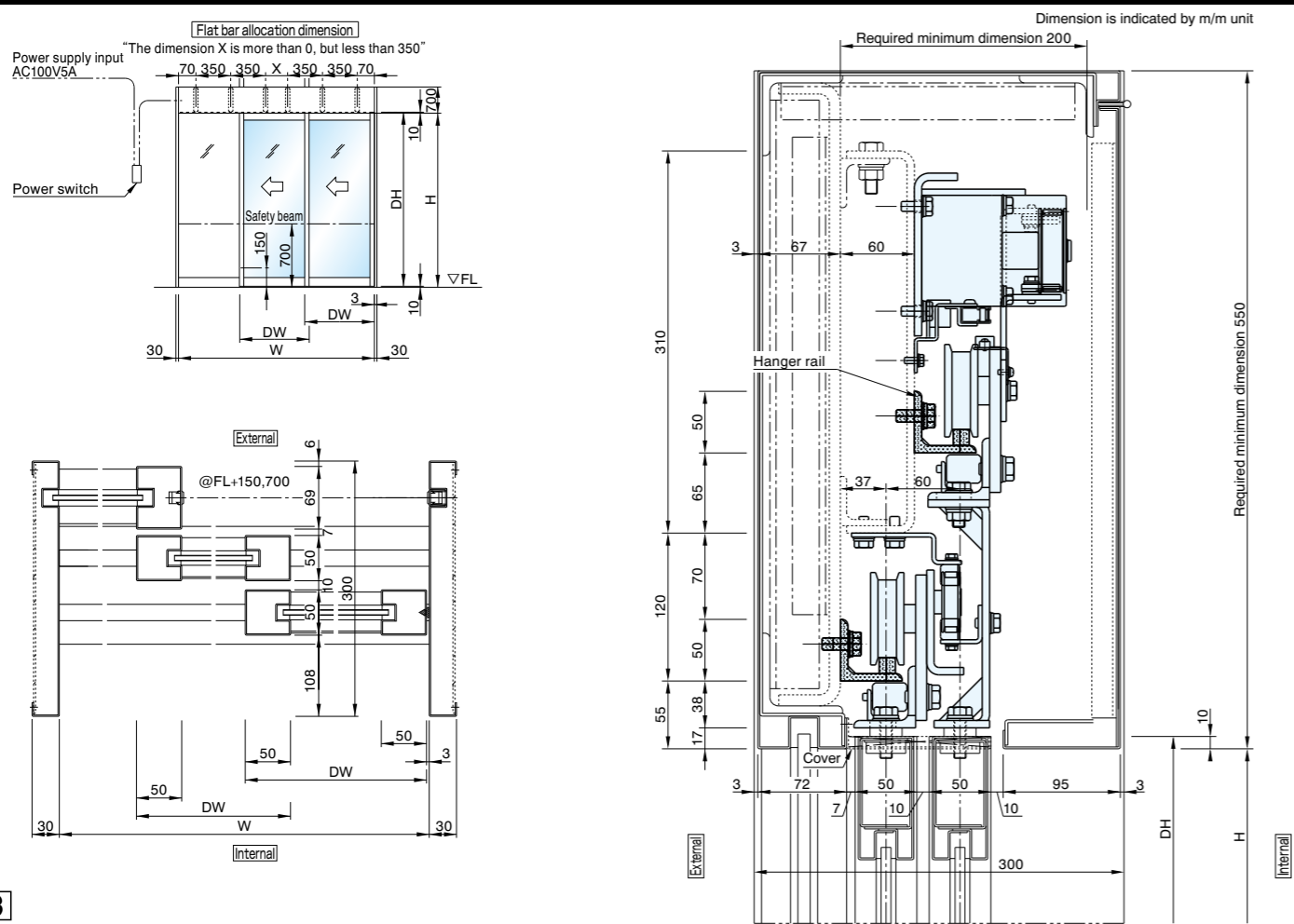


TELESCOPIC DOOR

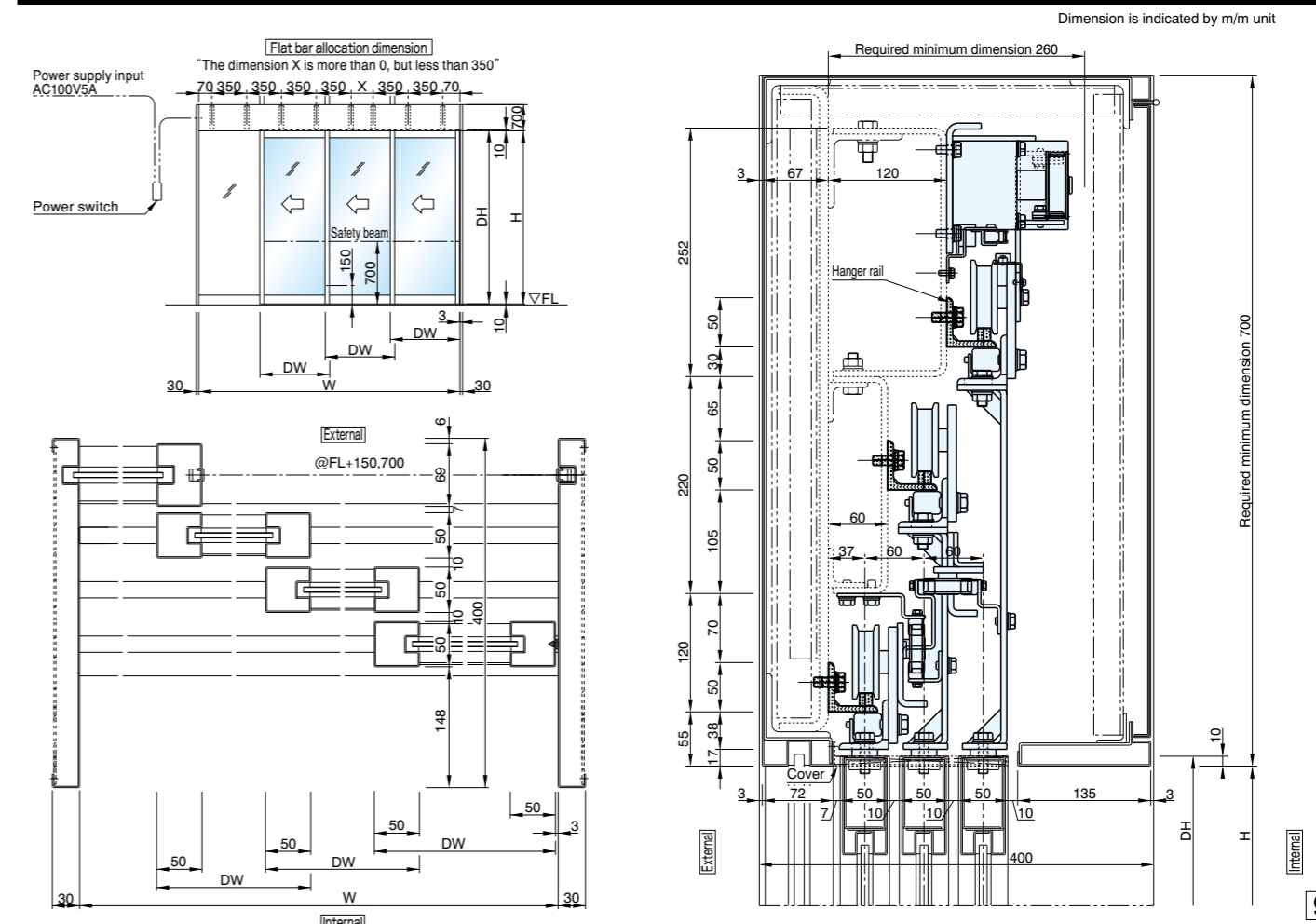
TRIPLE SLIDING TELESCOPIC DOOR (RM-300S3, RM-400W3, RH-500S3, RH-600W3)

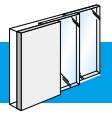


DOUBLE SLIDING TELESCOPIC DOOR (RS-770S2, RS-880W2)



TRIPLE SLIDING TELESCOPIC DOOR (RS-770S3, RS-880S3)

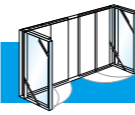
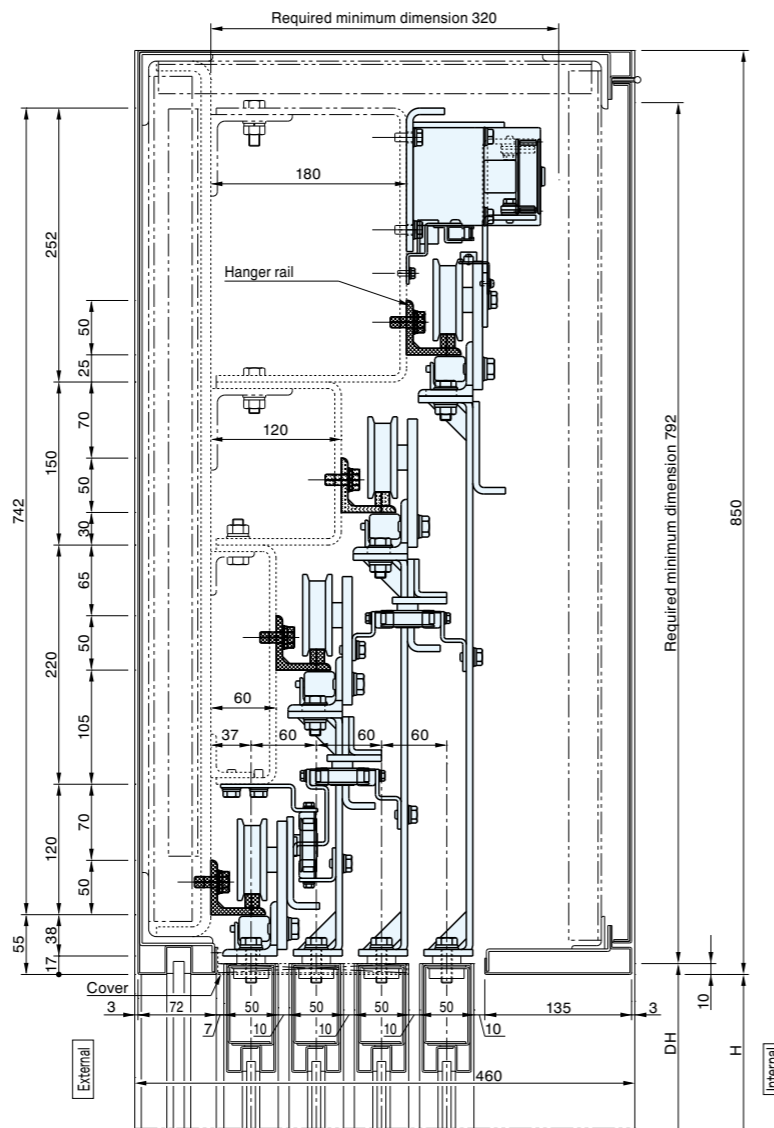
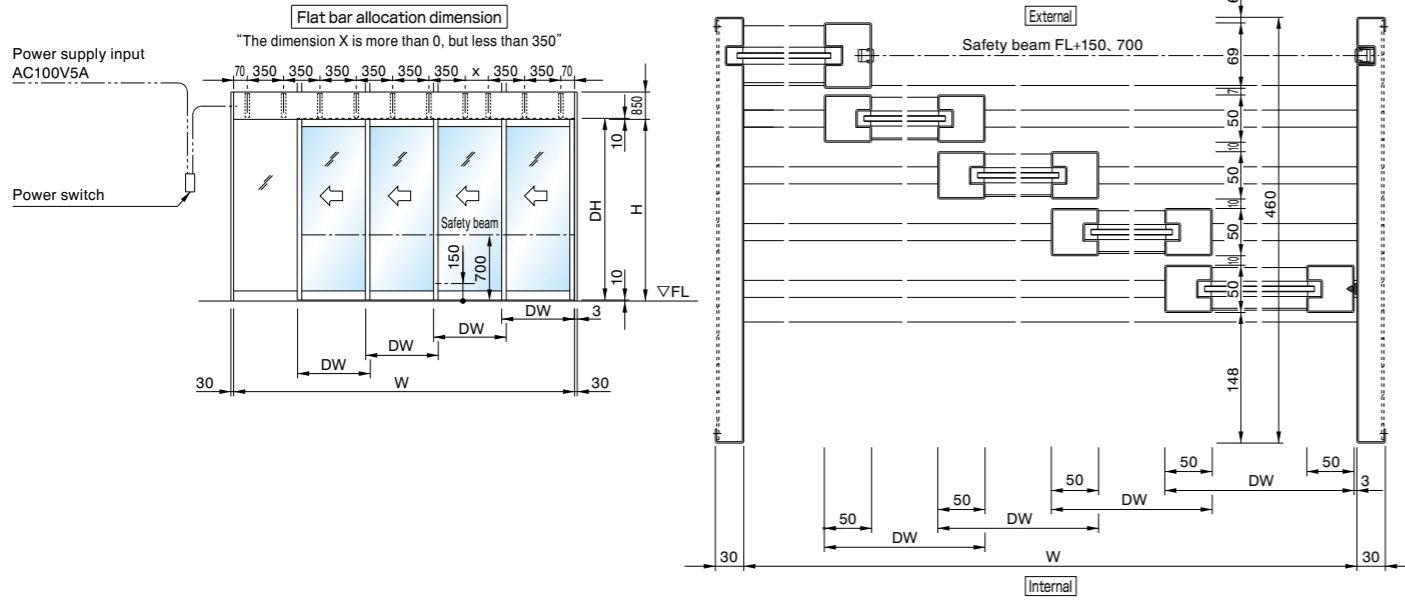




TELESCOPIC DOOR

QUAD SLIDING TELESCOPIC DOOR (RS-770S4, RS-880W4)

Dimension is indicated by m/m unit



SPACE MAKE

SPACE MAKE (RSMM-300S, RSMM-330S, RSMM-400W, RSMM-440W, RSMH-600W, RSMH-660W)

Dimension is indicated by m/m unit

