

# RYOBI®

Beyond Ideals and Dreams

## Summary of Selected Models



D-4550 Surface-Mounted Door Closer  
Extra-Durable and Lightweighted Body  
made of R14 Hard Aluminum Alloy

# Surface Mounted Door Closer

**D-4550 SERIES, Heavy-Duty**

**D-3550 SERIES, Semi Heavy-Duty**

**D-1610 SERIES, Medium-Duty**

# RYOBI D-4550 SERIES (Heavy-Duty Models) (\*1)

(\*1) Extra-Durable and Lightweighted Body made of R14 High-Silicon Hard Aluminum Alloy

## 1. Model Chart

### 1-1. Original Complete Set (Heavy-Duty Door Closer Body + original Regular Arm)

Model No. Complete Set	Size = Closing Force (ANSI)	Model Selection		Applicable Door Size		Max. Weight
		with Delayed- Action	Body for Assembly	Max. Width		
				Exterior	Interior	
D-4550 TP (*2)	2-6	D-4550DA TP	DB-4550/DB-4550DA	48"=4'0"(1,219mm)	60"=5'0"(1,524mm)	330lbs (150kgs)
D-4551 TP (*3)	1-4	D-4551DA TP	DB-4551/DB-4551DA	36"=3'0"(914mm)	44"=3'8"(1,118mm)	220lbs (100kgs)
DB-4550 w/TR (*4)	1-4	-	DB-4550/DB-4550DA	36"=3'0"(914mm)	44"=3'8"(1,118mm)	154lbs (70kgs)

(\*2) D-4550 TP/D-4550DA TP/D-4551 TP/D-4551DA TP are comprised of Body for Assembly + A45-501 (Regular Arm (=main arm, forearm, and foot bracket)) + Parallel bracket (Tri-Pack).

(\*3) D-4551 Series are applied to ADA Barrier Free standard.

(\*4) Closing Force of Body for Assembly with Track-Rail Arm as well as Parallel Arm is smaller than one of Body for Assembly with Regular Arm.

### 1-2. Extra-Duty Parallel Arm

Selection of Extra-Duty Arm by Mounting Application (Combination with Body for Assembly)					
Parallel(Push Side)					
EDA(*5)	EDA-H	EDA-S	EDA-HS	EDA-CS	EDA-HCS
(A45-505)	(A45-505H)	(A45-505S)	(A45-505HS)	(A45-505CS)	(A45-505HCS)

(\*5) Re suffix and description, please refer to P.10. The lower columns indicate Ryobi's part numbers.

### 1-3. Original Arm

Selection of Original Arm by Mounting Application (Combination with Body for Assembly)					
Regular(Pull Side)/Top-Jamb(Push Side)		Parallel(Push Side)		Track-Rail(Pull Side)	
(no suffix)(*6)	L (Top-Jamb only)	H	HP	T	HT
(A45-501)	(A45-501L)	(A45-501H)	(A45-503H)	(A45-507T)	(A45-507HT)

(\*6) Re suffix and description, please refer to P.10. The lower columns indicate Ryobi's part numbers.

## 2. Features, Specifications, Finishes, and Accessories

### 2-1. Features

Advantage	Low Defective Ratio and Low Quality Uneveness Extra-Durable and Lightweighted Body made of R14 Hard Aluminum Alloy, and Extra-Durable Arm made of Forged-Steel High Efficiency (Closing Force/Opening Force=about 70% in whole closing cycle)				
Mechanism	Full Fluid Oil Hydraulic Checking, All-Season Fluid Latching-Action Rack & Pinion (stable closing/latching speeds)				
General Features	Non-Handed Backcheck (original function) (Advanced Backcheck model is available) Delayed-Action (selection of body for assembly) Hold-Open (selection of arm) (Hold-Open Angle and Force can be adjusted) Stop (selection of arm) (Compression-Stop model is available)				
Compliance	(1) ANSI/BHMA A156.4-2019 Grade 1, (2) UL228/UL10C, (3) ADA Barrier Free (D-4551 Sub-Series only)				

### 2-2. Specifications

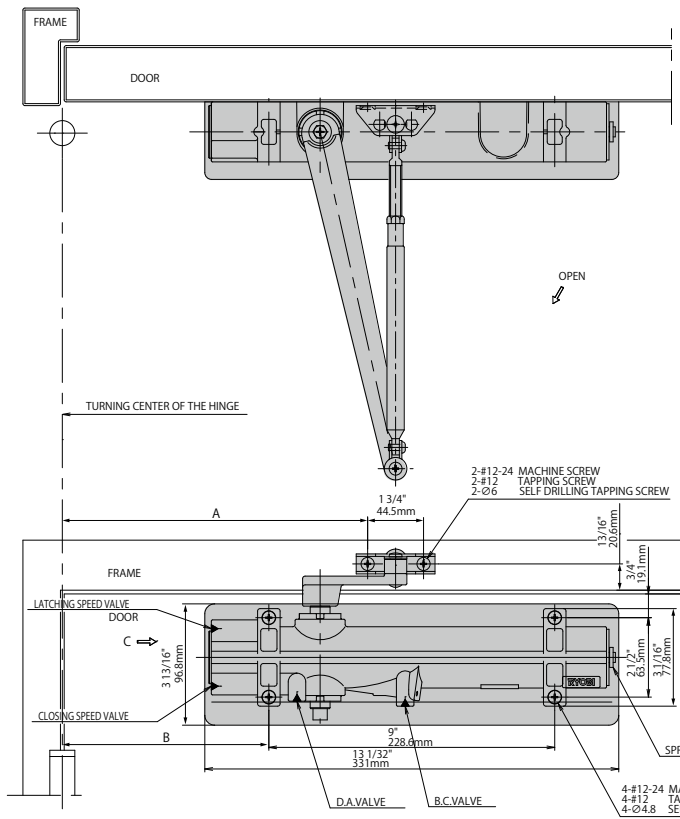
Adjustment	Closing Force Closing Speed, Latching Speed, and Backcheck Force Delayed-Action Speed	(by nut on the body and foot mounting position) (by valves on the body) (by valve on the body)
Arm Option for mounting application	Regular (pull side) & Top-Jamb (push side) Parallel (push side) Track-Rail (pull side)	(refer to Model Chart#1-2/1-3) (refer to Model Chart#1-2/1-3) (refer to Model Chart#1-2/1-3)
Supplemental Arm Option	Long Rod (selection of arm, Top-Jamb only) Hold-Open (selection of arm) Stop & Compression-Stop (selection of arm)	(refer to Model Chart#1-2/1-3) (refer to Model Chart#1-2/1-3) (refer to Model Chart#1-2/1-3)

### 2-3. Finishes/Accessories

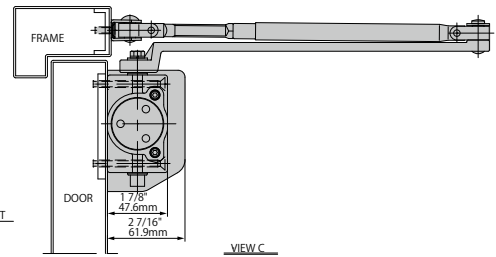
Finish	Aluminum-Silver painted, Dark-Bronze painted, or Black painted (selectional), Other finishes (optional)
Cover	Metal cover (optional), Plastic Cover (original)
Furnished Items	Fasteners (machine screws, tapping screws, self-drilling tapping screws, hex key for valve, hex wrench for nut) Parallel Bracket for original complete sets (Tri-Pack) only for both mounting applications of "Regular" and "Parallel" Instruction Manual, and Template Paper

# RYOBI D-4550 SERIES

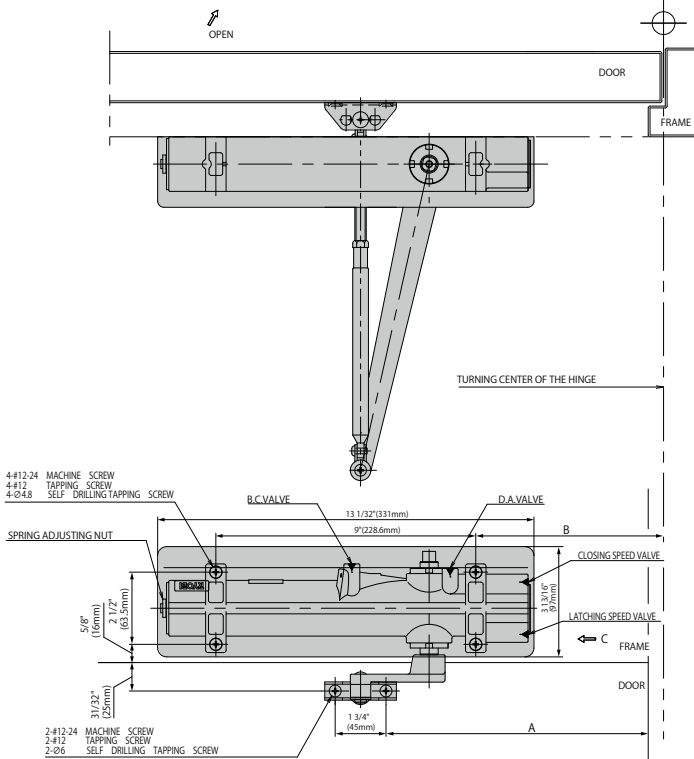
## Regular Arm Application (Pull Side)



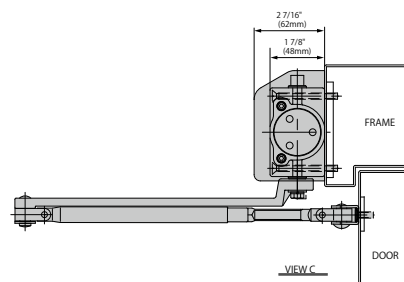
	MAXIMUM DOOR OPENING	
	120°	180°
A	11 5/8" (295.3mm)	9 5/8" (244.5mm)
B	8 1/2" (215.9mm)	6 1/2" (165.1mm)



## Top-Jamb Application (Push Side with Regular Arm with Long Rod Forearm)

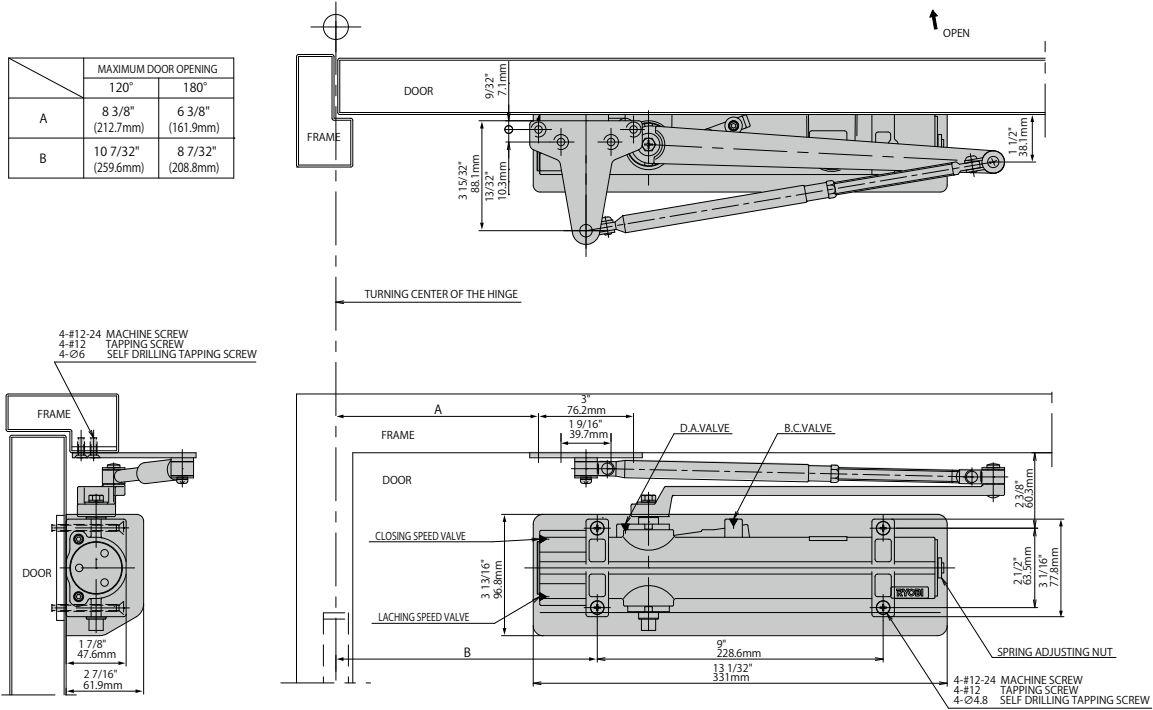


	MAXIMUM DOOR OPENING	
	120°	180°
A	11 5/8" (295mm)	9 5/8" (244mm)
B	8 1/2" (216mm)	6 1/2" (165mm)

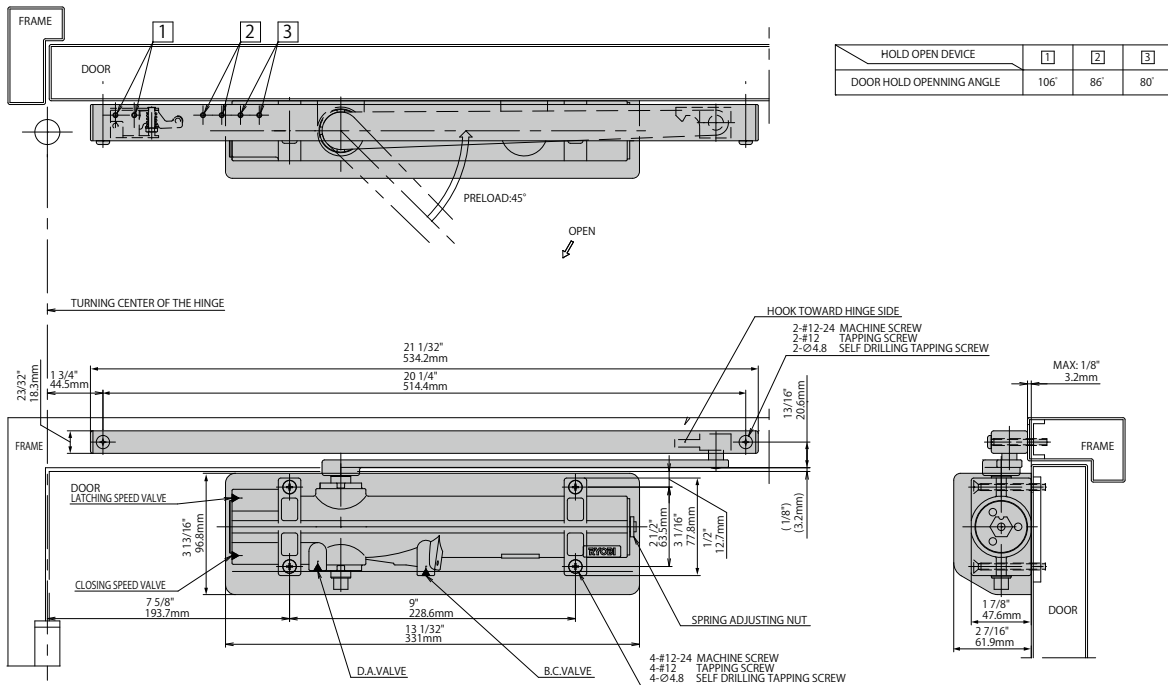


# RYOBI D-4550 SERIES

## Parallel Arm Application (Push Side)



## Track-rail Arm Application (Pull Side)



# RYOBI D-3550 SERIES (Semi Heavy-Duty Models) (\*1)

(\*1) Extra-durable and lightweighted body made of R14 High-Silicon Hard Aluminum Alloy

## 1. Model Chart

### 1-1. Original Complete Set (Semi Heavy-Duty Door Closer Body + original Regular Arm)

Model No. Complete Set	Size = Closing Force (ANSI)	Model Selection		Applicable Door Size		Max. Weight
		with Delayed- Action	Body for Assembly	Exterior	Interior	
D-3550 TP (*2)	2-5	D-3550DA TP	DB-3550/DB-3550DA	48"=4'0"(1,219mm)	60"=5'0"(1,524mm)	264lbs (120kgs)
D-3551 TP (*3)	1-4	D-3551DA TP	DB-3551/DB-3551DA	36"=3'0"(914mm)	44"=3'8"(1,118mm)	220lbs (100kgs)
DB-3550 w/TR (*4)	1-3	-	DB-3550/DB-3550DA	30"=2'6"(762mm)	38"=3'2"(965mm)	154lbs (70kgs)

(\*2) D-3550 TP/D-3550DA TP/D-3551 TP/D-3551DA TP are comprised of Body for Assembly + A45-501 (Regular arm (=main arm, forearm, and foot bracket)) + Parallel bracket (Tri-Pack).

(\*3) D-3551 Series are applied to ADA Barrier Free standard.

(\*4) Closing Force of Body for Assembly with Track-Rail Arm as well as Parallel Arm is smaller than one of Body for Assembly with Regular Arm.

### 1-2. Extra-Duty Parallel Arm

Selection of Extra-Duty Arm by Mounting Application (Combination with Body for Assembly)					
Parallel(Push Side)					
EDA(*5)	EDA-H	EDA-S	EDA-HS	EDA-CS	EDA-HCS
(A45-505)	(A45-505H)	(A45-505S)	(A45-505HS)	(A45-505CS)	(A45-505HCS)

(\*5) Re suffix and description, please refer to P.10. The lower columns indicate Ryobi's part numbers.

### 1-3. Original Arm

Selection of Original Arm by Mounting Application (Combination with Body for Assembly)					
Regular(Pull Side)/Top-Jamb(Push Side)			Parallel(Push Side)	Track-Rail(Pull Side)	
(no suffix)(*6)	L (Top Jamb only)	H	HP	T	HT
(A45-501)	(A45-501L)	(A45-501H)	(A45-503H)	(A45-507T)	(A45-507HT)

(\*6) Re suffix and description, please refer to P.10. The lower columns indicate Ryobi's part numbers.

## 2. Features, Specifications, Finishes, and Accessories

### 2-1. Features

Advantage	Low Defective Ratio and Low Quality Unevenness Extra-Durable and Lightweighted Body made of R14 Hard Aluminum Alloy, and Extra-Durable Arm made of Forged-Steel High Efficiency (Closing Force/Opening Force=about 70% in whole closing cycle)
Mechanism	Full Fluid Oil Hydraulic Checking, All-Season Fluid Latching-Action Rack & Pinion (stable closing/latching speeds)
General Features	Non-Handed Backcheck (original function) Delayed-Action (selection of body for assembly) Hold-Open (selection of arm) (Hold-Open Angle and Force can be adjusted) Stop (selection of arm) (Compression-Stop model is available)
Compliance	(1) ANSI/BHMA A156.4-2019 Grade 1, (2) UL 228/UL 10C, (3) ADA Barrier Free (D-3551 Sub-Series only)

### 2-2. Specifications

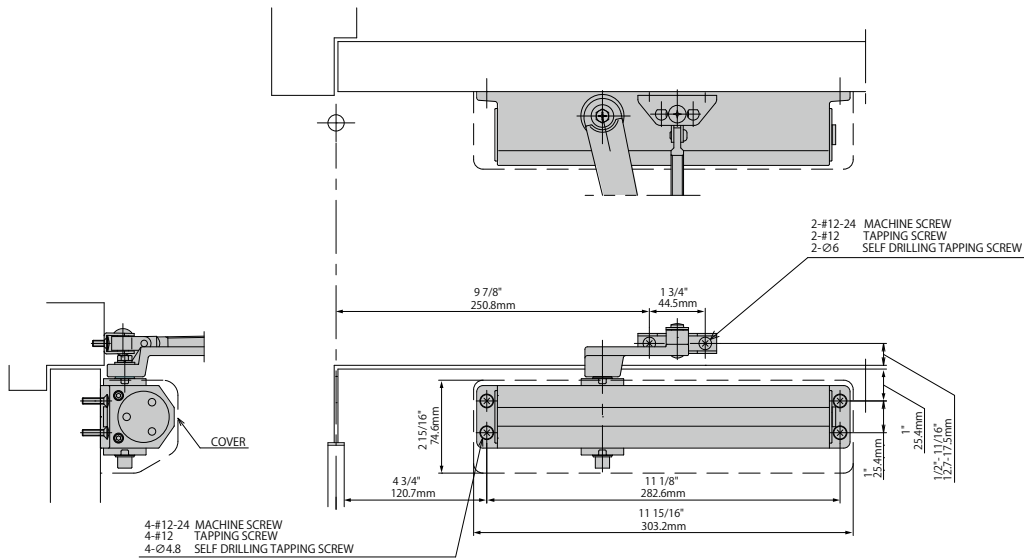
Adjustment	Closing Force (by nut on the body and foot mounting position) Closing Speed, Latching Speed, and Backcheck Force (by valves on the body) Delayed-Action Speed (by valve on the body)
Arm Option for mounting application	Regular (pull side) & Top-Jamb (push side) (refer to Model Chart#1-2/1-3) Parallel (push side) (refer to Model Chart#1-2/1-3) Track-Rail (pull side) (refer to Model Chart#1-2/1-3)
Supplemental Arm Option	Long Rod (selection of arm, Top-Jamb only) (refer to Model Chart#1-2/1-3) Hold-Open (selection of arm) (refer to Model Chart#1-2/1-3) Stop & Compression-Stop (selection of arm) (refer to Model Chart#1-2/1-3)

### 2-3. Finishes/Accessories

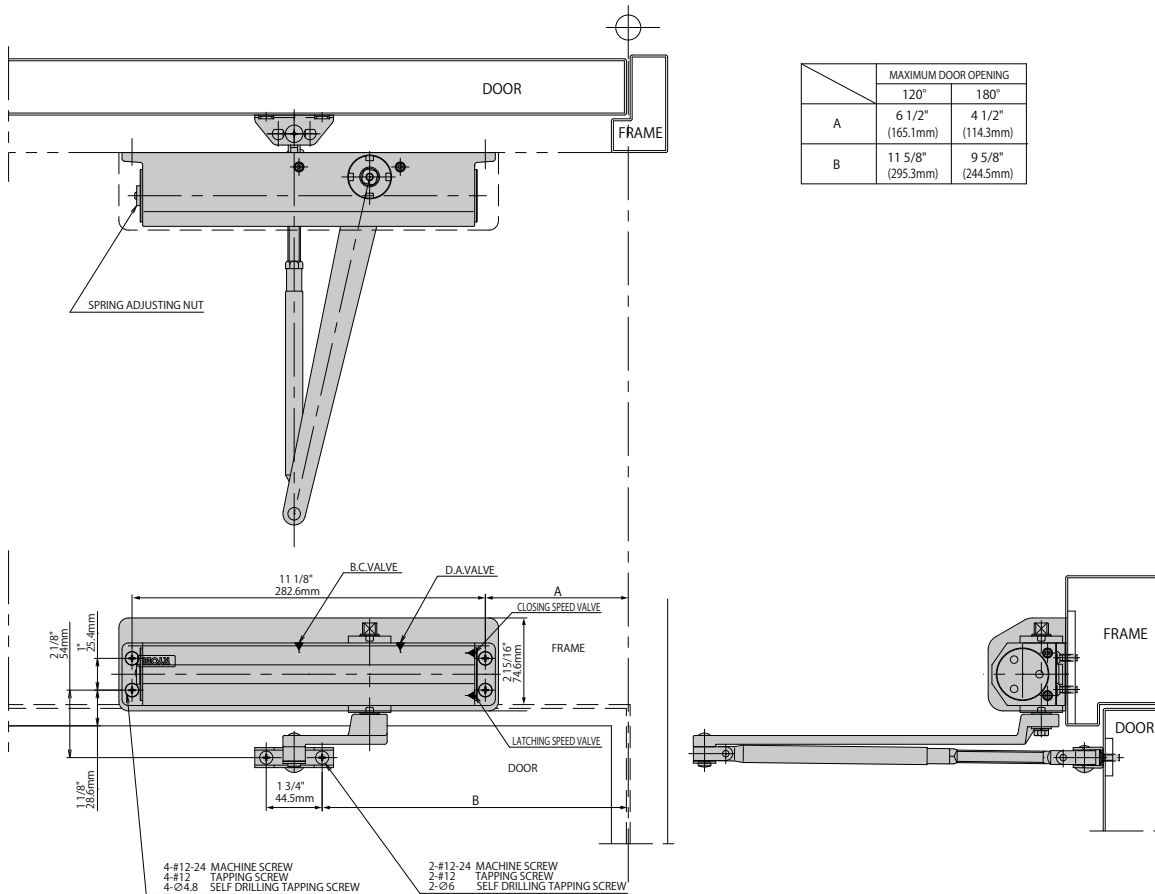
Finish	Aluminum-Silver painted, Dark-Bronze painted, or Black painted (selectional), Other finishes (optional)
Cover	Metal cover (optional), Plastic Cover (standard)
Furnished Items	Fasteners (machine screws, tapping screws, self-drilling tapping screws, hex key for valve, hex wrench for nut) Parallel Bracket for original complete sets (Tri-Pack) only for both mounting applications of "Regular" and "Parallel" Instruction Manual, and Template Paper

# RYOBI D-3550 SERIES

## Regular Arm Application (Pull Side)

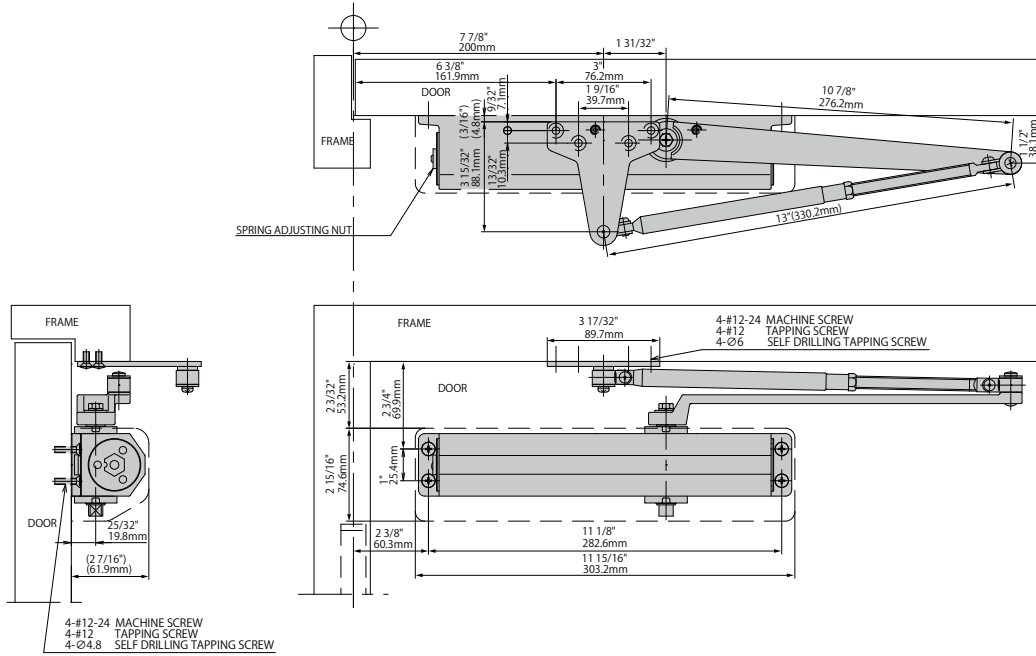


## Top-Jamb Application (Push Side with Regular Arm with Long Rod Forearm)



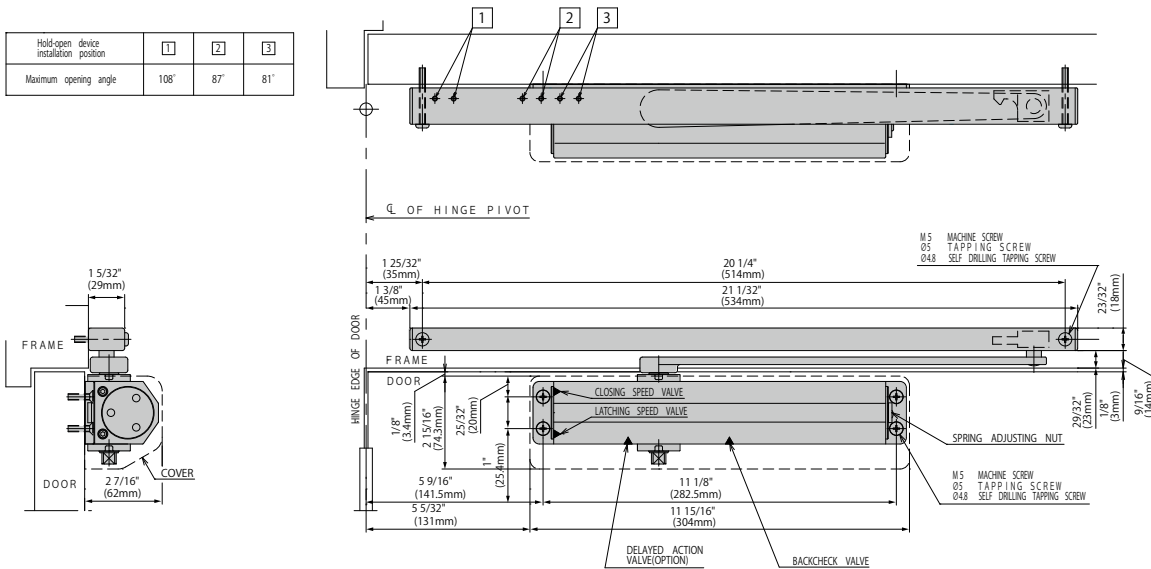
# RYOBI D-3550 SERIES

## Parallel Arm Application (Push Side)



## Track-rail Arm Application (Pull Side)

Hold-open device installation position	1	2	3
Maximum opening angle	108°	87°	81°



# RYOBI D-1610 SERIES (Medium-Duty Models)

## 1. Model Chart

### 1-1. Complete Set (Medium-Duty Door Closer Body + Arm)

Model No. Complete Set	Size = Closing Force (ANSI)	Model Selection		Applicable Door Size		
		with Delayed- Action	Body for Assembly	Max. Width		Max. Weight
				Exterior	Interior	
D-1610 (*1)	2-5	n/a	DB-1610	42"=3'6"(1,067mm)	48"=4'0"(1,219mm)	220lbs (100kgs)
D-1611 (*2)	1-4	n/a	DB-1611	36"=3'0"(914mm)	44"=3'8"(1,118mm)	220lbs (100kgs)
DB-1610 w/TR (*3)	1-3	-	DB-1610	30"=2'6"(762mm)	38"=3'2"(965mm)	154lbs (70kgs)

(\*1) Complete Set of D-1610 Series are comprised of body for assembly + A16-401 (Regular Arm (=main arm, forearm, and foot bracket))

(\*2) D-1611 Sub-Series are applied to ADA Barrier Free standard.

(\*3) Closing Force of Body for Assembly with Track-Rail Arm as well as Parallel Arm is smaller than one of Body for Assembly with Regular Arm.

### 1-2. Arm

Selection of Arm by Mounting Application (Combination with Body for Assembly)					
Regular(Pull Side)/Top-Jamb(Push Side)		Parallel(Push Side)		Track-Rail(Pull Side)	
(no suffix)	L (*4)	H	HP	T	HT
(A16-401)	(A16-401L)	(A16-401H)	(A16-403H)	(A16-407T)	(A16-407HT)

(\*4) Re suffix and description, please refer to P.10. The lower columns indicate Ryobi's part numbers.

## 2. Features, Specifications, Finishes, and Accessories

### 2-1. Features

Advantage	Low Defective Ratio and Low Quality Unevenness Lightweight Body made of Aluminum Alloy, and Durable Arm Set made of Forged-Steel High Efficiency (Closing Force/Opening Force=about 70% in whole closing cycle)
Mechanism	Full Fluid Oil Hydraulic Checking, All-Season Fluid Latching-Action Rack & Pinion (stable closing/latching speeds)
General Features	Non-Handed Backcheck (original function)  Hold-Open (selection of arm)
Compliance	(1) ANSI/BHMA A156.4-2019 Grade 1, (2) UL 228, (3) ADA Barrier Free (D-1611 Sub-Series only)

### 2-2. Specifications

Adjustment	Closing Force (by nut on the body and foot mounting position) Closing Speed, Latching Speed, and Backcheck Force (by valves on the body)
Arm Option for mounting application	Regular (pull side) & Top-Jamb (push side) (refer to Model Chart#1-2) Parallel (push side) (refer to Model Chart#1-2) Track-Rail (pull side) (refer to Model Chart#1-2)
Supplemental Arm Option	Long Rod (selection of arm, Top-Jamb only) (refer to Model Chart#1-2) Hold-Open (selection of arm) (refer to Model Chart#1-2)

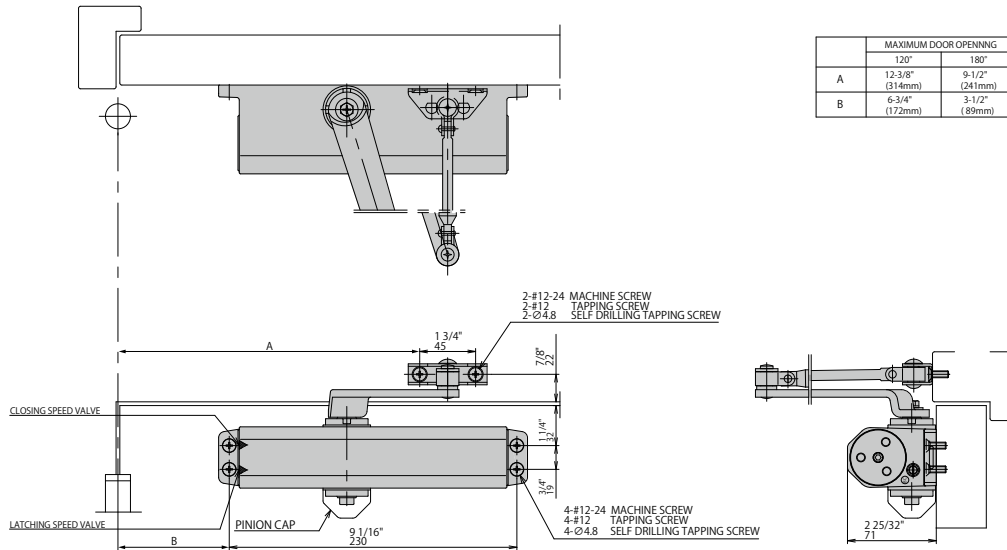
### 2-3. Finishes/Accessories

Finish	Aluminum-Silver painted, Dark-Bronze painted, or Black painted (selectional), Other finishes (optional)
Cover	Plastic Cover (optional)
Furnished Items	Fasteners (machine screws, tapping screws, self-drilling tapping screws, hex key for valve, hex wrench for nut)  Instruction Manual, and Template Paper

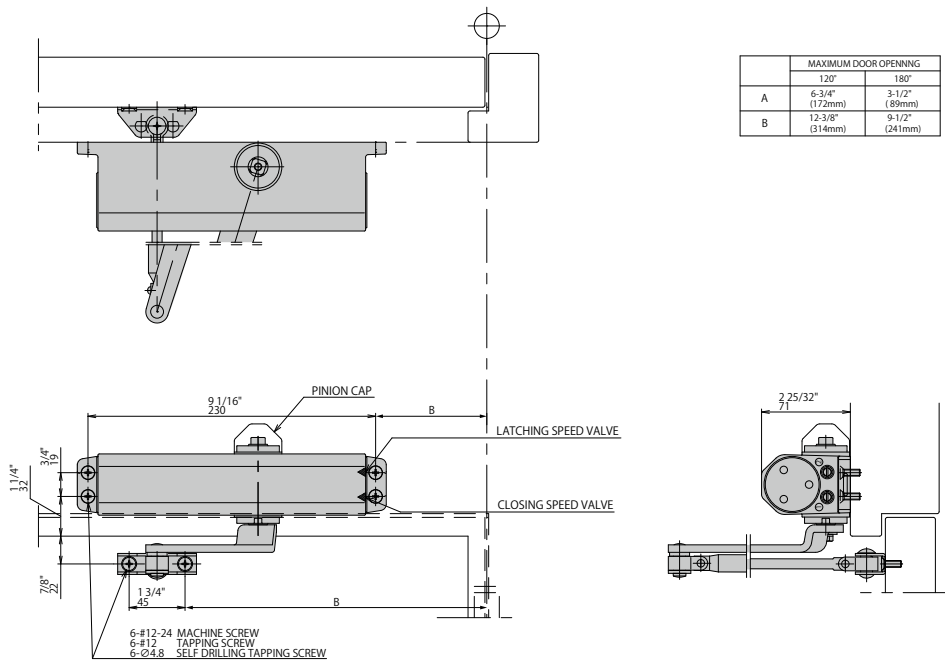


# RYOBI D-1610 SERIES

## Regular Arm Application (Pull Side)



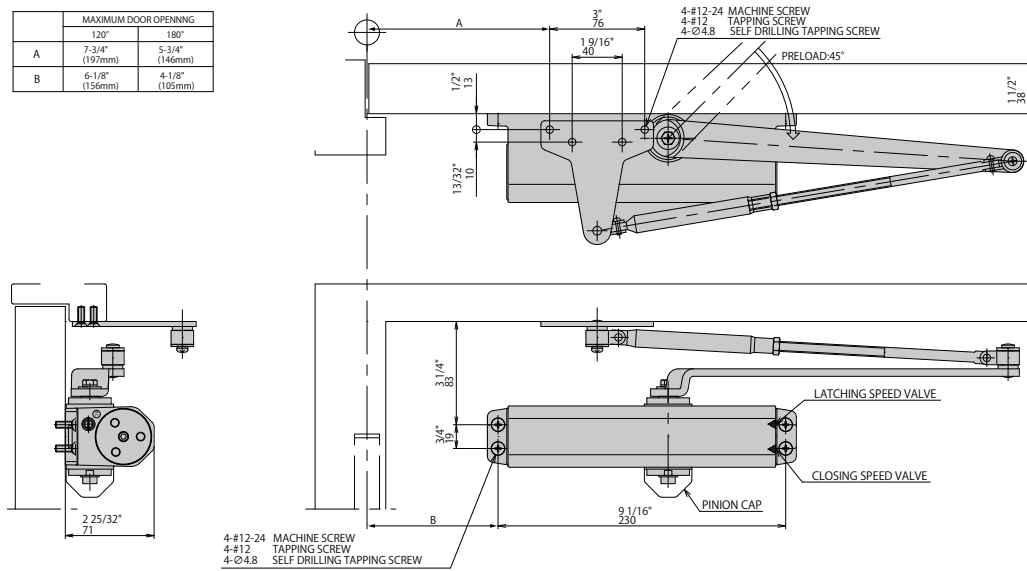
## Top-Jamb Application (Push Side with Regular Arm with Long Rod Forearm)



# RYOBI D-1610 SERIES

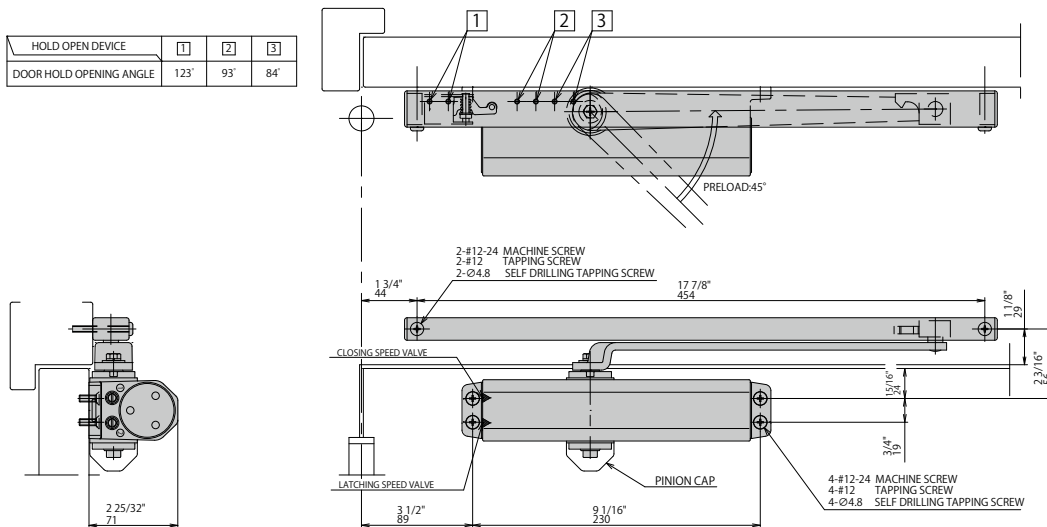
## Parallel Arm Application (Push Side)

	MAXIMUM DOOR OPENING	
	120°	180°
A	7-3/4" (197mm)	5-3/4" (146mm)
B	6-1/8" (156mm)	4-1/8" (105mm)



## Track-rail Arm Application (Pull Side)

HOLD OPEN DEVICE	1	2	3
DOOR HOLD OPENING ANGLE	123°	93°	84°



# HOW TO ORDER (SUFFIX AND DESCRIPTION)

## 1.HOW TO ORDER

Model	Size	Options	Arm Type	Finishes
D-455	0: 2-6 1: 1-4	DA : Delayed-Action MC: Metal Cover AVB: advanced backcheck (D-4550 Sub-Series only)	(no suffix) L H  HP T HT EDA EDA-H EDA-S EDA-HS EDA-CS EDA-HCS	AL689 DB695 BL693
D-355	0: 2-5 1: 1-4	DA : Delayed-Action MC: Metal Cover		
D-161	0: 2-5 1: 1-4		(no suffix) L H HP	AL689 DB695 BL693

## 2.ARM SELECTION

Suffix	Applied Model Series	Description
(no suffix)	D-4550/D-3550	(Original) Regular (Standard) Arm
L	D-4550/D-3550	(Original) Regular (Standard) Arm with Long Rod Forearm for Top-Jamb Mounting Application
H	D-4550/D-3550	(Original) Regular (Standard) Arm with Hold-Open
HP	D-4550/D-3550	(Original) Parallel Arm with Hold-Open
T	D-4550/D-3550	(Original) Track-Rail Arm
HT	D-4550/D-3550	(Original) Track-Rail Arm with Hold-Open
EDA	D-4550/D-3550	Extra-Duty Parallel Arm
EDA-H	D-4550/D-3550	Extra-Duty Parallel Arm with Hold-Open
EDA-S	D-4550/D-3550	Extra-Duty Parallel Arm with Stop
EDA-HS	D-4550/D-3550	Extra-Duty Parallel Arm with Hold-Open and Stop
EDA-CS	D-4550/D-3550	Extra-Duty Parallel Arm with Compression-Stop (Cushion-Stop)
EDA-HCS	D-4550/D-3550	Extra-Duty Parallel Arm with Hold-Open and Compression-Stop (Cushion-Stop)
(no suffix)	D-1610	(Original) Regular (Standard) Arm
L	D-1610	(Original) Regular (Standard) Arm with Long Rod Forearm for Top-Jamb Mounting Application
H	D-1610	(Original) Regular (Standard) Arm with Hold-Open
HP	D-1610	(Original) Parallel Arm with Hold-Open

## 3.FINISH

Suffix	Description
AL689	Aluminum-Silver Painted
DB695	Dark-Bronze Painted
BL693	Black painted
Others	(optional)

# PART NO. AND DESCRIPTION

## 1.D-4550 Series Door Closer, Aluminium-Silver painted

<p>a.</p> <p>D-4550 TP AL689 D-4550DA TP AL689 D-4551 TP ADA AL689 D-4551DA TP ADA AL689</p>	<p>HD SM Door Closer, Tri-Pack (Body + Regular Arm + Parallel Bracket), AL689 HD SM Door Closer, Tri-Pack (Body with DA + Regular Arm + Parallel Bracket), AL689 HD SM Door Closer, Tri-Pack (Body + Regular Arm + Parallel Bracket), ADA, AL689 HD SM Door Closer, Tri-Pack (Body with DA + Regular Arm + Parallel Bracket), ADA, AL689</p>
<p>b.</p> <p>D4550 RG AL689 D4550 L NA TJ AL689 D4550 H RG AL689 D4550 HP PR AL689 D4550 T TR AL689 D4550 HT TR AL689</p>	<p>HD SM Door Closer Body + Regular Arm, AL689 HD SM Door Closer Body + Regular Arm with Long Rod NA for TJ, AL689 HD SM Door Closer Body + Regular Arm with Hold-Open, AL689 HD SM Door Closer Body + Parallel Arm with Hold-Open, AL689 HD SM Door Closer Body + Track-Rail Arm, AL689 HD SM Door Closer Body + Track Rail Arm with Hold-Open, AL689</p>
<p>c.</p> <p>D4550 EDA PR AL689 D4550 EDA-H PR AL689 D4550 EDA-S PR AL689 D4550 EDA-HS PR AL689 D4550 EDA-CS PR AL689 D4550 EDA-HCS PR AL689</p>	<p>HD SM Door Closer Body + EDA, AL689 HD SM Door Closer Body + EDA with Hold-Open, AL689 HD SM Door Closer Body + EDA with Stop, AL689 HD SM Door Closer Body + EDA with Hold-Open and Stop, AL689 HD SM Door Closer Body + EDA with Compression-Stop, AL689 HD SM Door Closer Body + EDA with Hold-Open and Compression Stop, AL689</p>
<p>d.</p> <p>D4550DA RG AL689 D4550DA L NA TJ AL689 D4550DA H RG AL689 D4550DA HP PR AL689 D4550DA T TR AL689 D4550DA HT TR AL689</p>	<p>HD SM Door Closer Body with DA + Regular Arm, AL689 HD SM Door Closer Body with DA + Regular Arm with Long Rod NA for TJ, AL689 HD SM Door Closer Body with DA + Regular Arm with Hold-Open, AL689 HD SM Door Closer Body with DA + Parallel Arm with Hold-Open, AL689 HD SM Door Closer Body with DA + Track-Rail Arm, AL689 HD SM Door Closer Body with DA + Track Rail Arm with Hold-Open, AL689</p>
<p>e.</p> <p>D4550DA EDA PR AL689 D4550DA EDA-H PR AL689 D4550DA EDA-S PR AL689 D4550DA EDA-HS PR AL689 D4550DA EDA-CS PR AL689 D4550DA EDA-HCS PR AL689</p>	<p>HD SM Door Closer Body with DA + EDA, AL689 HD SM Door Closer Body with DA + EDA with Hold-Open, AL689 HD SM Door Closer Body with DA + EDA with Stop, AL689 HD SM Door Closer Body with DA + EDA with Hold-Open and Stop, AL689 HD SM Door Closer Body with DA + EDA with Compression-Stop, AL689 HD SM Door Closer Body with DA + EDA with Hold-Open and Compression Stop, AL689</p>

## 2.REMARKS

TP: Tri-Pack (Door Closer Body + Regular Arm + Parallel Bracket)

HD: Heavy-Duty

SM: Surface-Mounted

RG: Regular (Standard) Arm

NA: Non-Assembled

TJ: Top-Jump Mounting Application

PR: Parallel Arm

TR: Track-Rail arm

DA: Delayed-Action

AL689 : Aluminum-Silver Painted, Dark-Bronze painted (DB695) and Black painted (BL693) are available, other finishes are optional

ADA: ADA Barrier Free standard Applied

EDA: Extra-Duty Parallel Arm

# PART NO. AND DESCRIPTION (Continued)

## 3.D-4550 Series Door Closer, Aluminium-Silver Painted (continued)

f.	D4551 RG ADA AL689 D4551 L NA TJ ADA AL689 D4551 H RG ADA AL689 D4551 HP PR ADA AL689 D4551 T TR ADA AL689 D4551 HT TR ADA AL689	HD SM Door Closer Body + Regular Arm, ADA, AL689 HD SM Door Closer Body + Regular Arm with Long Rod NA for TJ, ADA, AL689 HD SM Door Closer Body + Regular Arm with Hold-Open, ADA, AL689 HD SM Door Closer Body + Parallel Arm with Hold-Open, ADA, AL689 HD SM Door Closer Body + Track-Rail Arm, ADA, AL689 HD SM Door Closer Body + Track Rail Arm with Hold-Open, ADA, AL689
g.	D4551 EDA PR ADA AL689 D4551 EDA-H PR ADA AL689 D4551 EDA-S PR ADA AL689 D4551 EDA-HS PR ADA AL689 D4551 EDA-CS PR ADA AL689 D4551 EDA-HCS PR ADA AL689	HD SM Door Closer Body + EDA, ADA, AL689 HD SM Door Closer Body + EDA with Hold-Open, ADA, AL689 HD SM Door Closer Body + EDA with Stop, ADA, AL689 HD SM Door Closer Body + EDA with Hold-Open and Stop, ADA, AL689 HD SM Door Closer Body + EDA with Compression-Stop, ADA, AL689 HD SM Door Closer Body + EDA with Hold-Open and Compression Stop, ADA, AL689
h.	D4551DA RG ADA AL689 D4551DA L NA TJ ADA AL689 D4551DA H RG ADA AL689 D4551DA HP PR ADA AL689 D4551DA T TR ADA AL689 D4551DA HT TR ADA AL689	HD SM Door Closer Body with DA + Regular Arm, ADA, AL689 HD SM Door Closer Body with DA + Regular Arm with Long Rod NA for TJ, ADA, AL689 HD SM Door Closer Body with DA + Regular Arm with Hold-Open, ADA, AL689 HD SM Door Closer Body with DA + Parallel Arm with Hold-Open, ADA, AL689 HD SM Door Closer Body with DA + Track-Rail Arm, ADA, AL689 HD SM Door Closer Body with DA + Track Rail Arm with Hold-Open, ADA, AL689
i.	D4551DA EDA PR ADA AL689 D4551DA EDA-H PR ADA AL689 D4551DA EDA-S PR ADA AL689 D4551DA EDA-HS PR ADA AL689 D4551DA EDA-CS PR ADA AL689 D4551DA EDA-HCS PR ADA AL689	HD SM Door Closer Body with DA + EDA, ADA, AL689 HD SM Door Closer Body with DA + EDA with Hold-Open, ADA, AL689 HD SM Door Closer Body with DA + EDA with Stop, ADA, AL689 HD SM Door Closer Body with DA + EDA with Hold-Open and Stop, ADA, AL689 HD SM Door Closer Body with DA + EDA with Compression-Stop, ADA, AL689 HD SM Door Closer Body with DA + EDA with Hold-Open and Compression Stop, ADA, AL689

## 4.Accessories

f.	P45-180D HD-DPL AL689 P45-4040 RPL AL689 P45-110 SBL AL689 P45HD-110 HD-SBL AL689 P45HD-112 HD-ABR AL689 P45-113 OPL AL689	HD Drop Plate, AL689 (original) Retrofit Plate to mount to LCN4040 Hole Pattern, AL689 (original) Spacer Block, AL689 HD Spacer Block, AL689 (original) Angle Bracket, AL689 (original) Offset Plate, AL689
----	---	--

## 5.REMARKS

TP: Tri-Pack (Door Closer Body + Regular Arm + Parallel Bracket)

HD: Heavy-Duty

SM: Surface-Mounted

RG: Regular (Standard) Arm

NA: Non-Assembled

TJ: Top-Jump Mounting Application

PR: Parallel Arm

TR: Track-Rail arm

DA: Delayed-Action

AL689 : Aluminum-Silver Painted, Dark-Bronze painted (DB695) and Black painted (BL693) are available, other finishes are optional

ADA: ADA Barrier Free standard Applied

EDA: Extra-Duty Parallel Arm