

Refer to table 1 how to install the plate spring and backcheck rack.

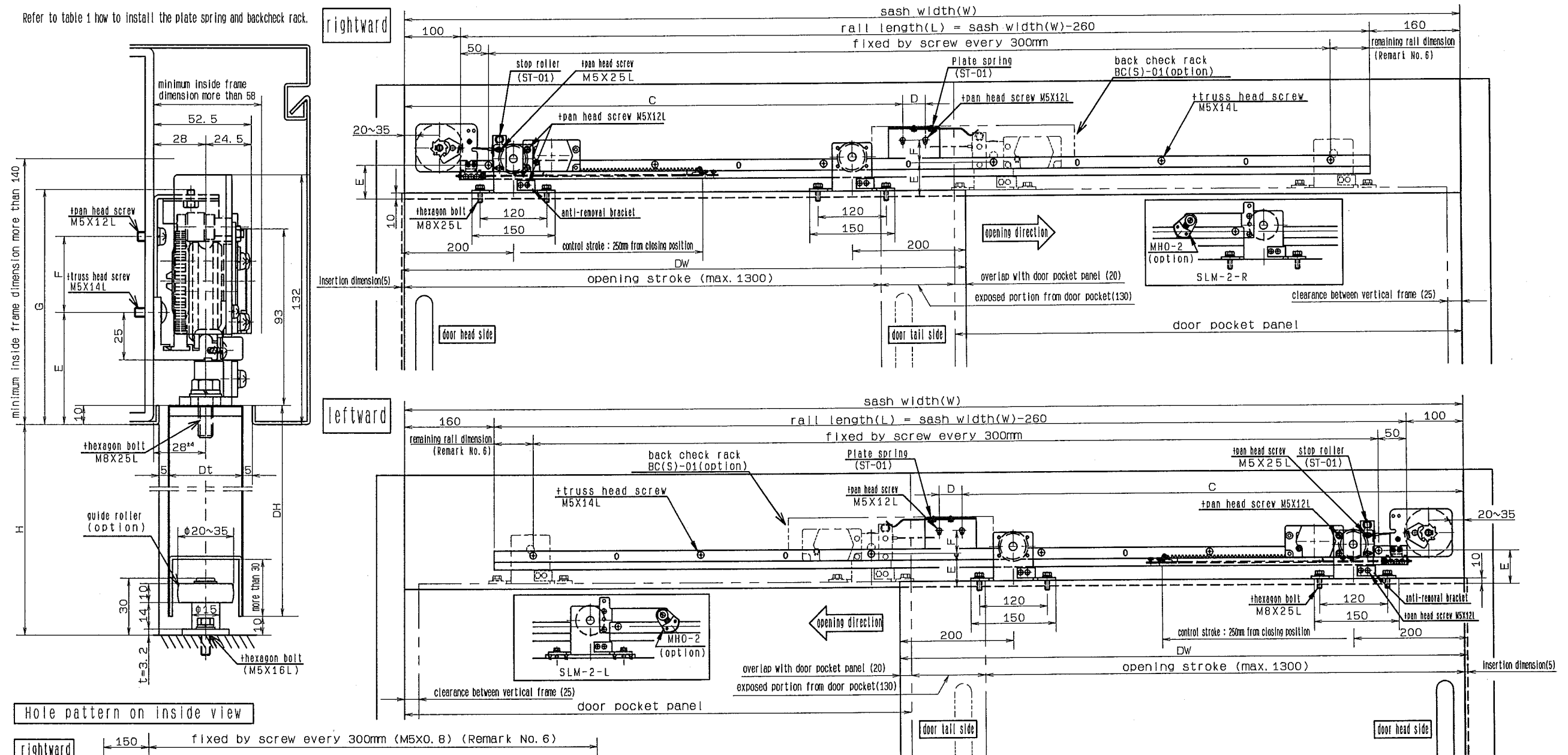


Table 1

model no.	C	D	E	F	G
plate spring ST-01	opening stroke140	40	59	40	124
back check rack BC(S)-01	opening stroke110	100	26	130	

Hold-open	model no.	Fixed door size width and height(mm)	Weight(kg)
Without Hold-open	SL-2	600*~1450	less than 80
With Hold-open	SLS-2	X2400	
With Multi Hold-open	SLM-2		

* The minimum door width is 700mm for the model with backcheck.

Remark

1. This is used both for rightward and leftward.
2. This drawing is for SLS-2 (w/h Hold-open devise)
3. Hold-open device is not included with SL-2 (w/o Hold-open device)
4. SLM-2 includes MHO-2 instead of Hold-open devise.
5. Make sure to mount the anti-removal bracket to prevent the door from falling down after hanging the door up.
6. Fixed the rail by a screw every 300mm.
If the remaining rail is in more than 155mm,
fixed the rail by a screw at a position 150mm away from the final position.
7. () dimensions are reference.
8. Instruct the model number with 'BC' at the end if the model with backcheck is required.
9. Refer to page 10 of the catalog for the installation of door stopper.

RYOBI LIMITED

PRODUCTS
sliding door closer

MODEL NO.
SL-2 · SLS-2 · SLM-2 (MHO-2 option)

DATE
07/30/2018

REV.